

Pressure Control, Reducing/Relieving Cartridges

*Powered by Sun **QuickPrint**,
your on-demand, customized catalogue solution.*

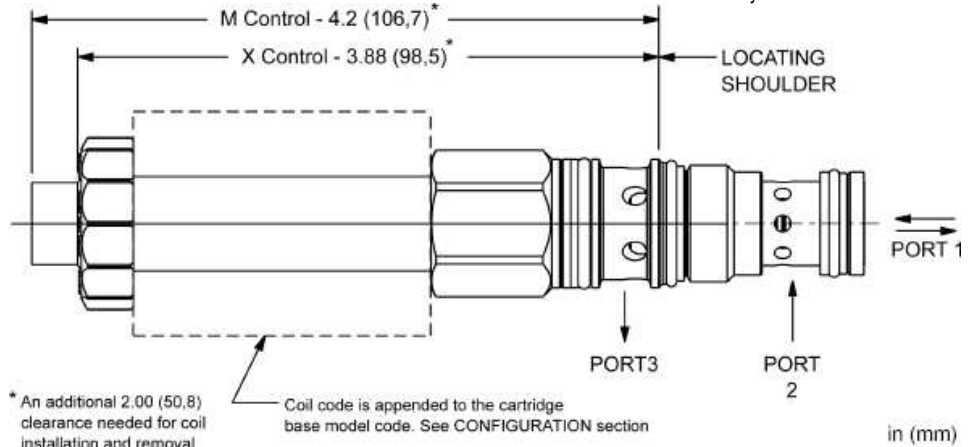
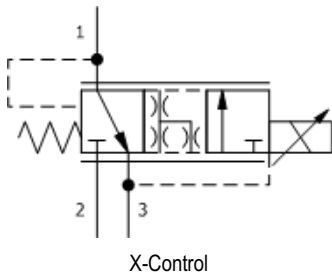
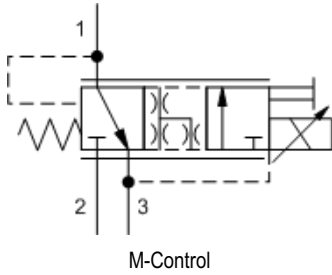
This information is subject to change without notice. Visit www.sunhydraulics.com for complete and up to date information.

PRDF	Electro-proportional, direct-acting, pressure reducing/relieving valve with open transition (740 Series)1
PRDG	Electro-proportional, direct-acting, pressure reducing/relieving valve (740 Series)2
PPBB	Pilot-operated, pressure reducing/relieving valve3
PPDB	Pilot-operated, pressure reducing/relieving valve4
PPDF	Pilot-operated, pressure reducing/relieving valve with drilled piston orifice5
PPFB	Pilot-operated, pressure reducing/relieving valve6
PPFF	Pilot-operated, pressure reducing/relieving valve with drilled piston orifice7
PPHB	Pilot-operated, pressure reducing/relieving valve8
PPHF	Pilot-operated, pressure reducing/relieving valve with drilled piston orifice9
PPJB	Pilot-operated, pressure reducing/relieving valve10
PPJF	Pilot-operated, pressure reducing/relieving valve with drilled piston orifice11
PPFC	Air-controlled, pilot-operated, pressure reducing/relieving valve12
PPHC	Air-controlled, pilot-operated, pressure reducing/relieving valve13
PPJC	Air-controlled, pilot-operated, pressure reducing/relieving valve14
PRDB	Direct-acting, pressure reducing/relieving valve15
PRFB	Direct-acting, pressure reducing/relieving valve16
PRHB	Direct-acting, pressure reducing/relieving valve17
PRJB	Direct-acting, pressure reducing/relieving valve18
PRBC	Direct-acting, pressure reducing/relieving valve with open transition19
PRDC	Direct-acting, pressure reducing/relieving valve with open transition20
PVDA	Pilot-operated, pressure reducing/relieving valve with drain to port 421
PVFA	Pilot-operated, pressure reducing/relieving valve with drain to port 422
PVHA	Pilot-operated, pressure reducing/relieving valve with drain to port 423

PVJA	Pilot-operated, pressure reducing/relieving valve with drain to port 424
PVDB	Ventable, pilot-operated, pressure reducing/relieving valve25
PVFB	Ventable, pilot-operated, pressure reducing/relieving valve26
PVHB	Ventable, pilot-operated, pressure reducing/relieving valve27
PVJB	Ventable, pilot-operated, pressure reducing/relieving valve28
PSDB	Direct-acting, pressure reducing/relieving valve with drain to port 429
PSFB	Direct-acting, pressure reducing/relieving valve with drain to port 430
PSHB	Direct-acting, pressure reducing/relieving valve with drain to port 431
PSDT	Direct-acting, pressure reducing/relieving main stage piloted from port 432
PSFT	Direct-acting, pressure reducing/relieving main stage piloted from port 433
PSHT	Direct-acting, pressure reducing/relieving main stage piloted from port 434
PSJT	Direct-acting, pressure reducing/relieving main stage piloted from port 435
PRDP	Electro-proportional, direct-acting, pressure reducing/relieving valve37
PRDN	Electro-proportional, direct-acting, pressure reducing/relieving valve, high pressure setting with no command38
PRDL	Electro-proportional, direct-acting, pressure reducing/relieving valve with open transition40
PRDM	Electro-proportional, direct-acting, pressure reducing/relieving valve with open transition - high pressure setting with no command41
PPDB8	Pilot-operated, pressure reducing/relieving main stage with integral T-8A control cavity42
PPDF8	Pilot-operated, pressure reducing/relieving main stage with drilled piston orifice and integral T-8A control cavity43
PPFB8	Pilot-operated, pressure reducing/relieving main stage with integral T-8A control cavity44
PPFF8	Pilot-operated, pressure reducing/relieving main stage with drilled piston orifice and integral T-8A control cavity45
PPHB8	Pilot-operated, pressure reducing/relieving main stage with integral T-8A control cavity46
PPHF8	Pilot-operated, pressure reducing/relieving main stage with drilled piston orifice and integral T-8A control cavity47
PPJB8	Pilot-operated, pressure reducing/relieving main stage with integral T-8A control cavity48

PPJF8	Pilot-operated, pressure reducing/relieving main stage with drilled piston orifice and integral T-8A control cavity49
PPDL8	Pilot-operated, pressure reducing/relieving main stage with open transition and integral T-8A control cavity50
PVDA8	Pilot-operated, pressure reducing/relieving main stage with integral T-8A control cavity and drain to port 451
PVFA8	Pilot-operated, pressure reducing/relieving main stage with integral T-8A control cavity and drain to port 452
PVHA8	Pilot-operated, pressure reducing/relieving main stage with integral T-8A control cavity and drain to port 453
PVHL8	Pilot-operated, pressure reducing/relieving main stage with integral T-8A control cavity and drain to port 454
PVJA8	Pilot-operated, pressure reducing/relieving main stage with integral T-8A control cavity and drain to port 455
PSDP	Electro-proportional, direct-acting, pressure reducing/relieving valve with drain to port 456
PSDL	Electro-proportional, direct-acting, pressure reducing/relieving valve with open transition and drain to port 457
PRBB	Direct-acting, pressure reducing/relieving valve58
PVDC8	Pilot-operated, pressure reducing/relieving main stage with integral T-8A control cavity, drilled piston orifice, and drain to port 459
PVDD	Ventable, pilot-operated, pressure reducing/relieving valve with drilled piston orifice60
PVFD	Ventable, pilot-operated, pressure reducing/relieving valve with drilled piston orifice61
PVHD	Ventable, pilot-operated, pressure reducing/relieving valve with drilled piston orifice62
PVJD	Ventable, pilot-operated, pressure reducing/relieving valve with drilled piston orifice63

Series	Ports	Cavities
Series Z Cartridges 3/8-24 UNF Cartridge Thread 5 mm Valve Hex Size 11 - 14 Nm Valve Installation Torque	3-Port	T-382A
Series P Cartridges M16 Cartridge Thread 22,2 mm Valve Hex Size 27 - 33 Nm Valve Installation Torque	2-Port 2-Port (Deep) 3-Port	T-8A T-8DP T-9A
Series 0 Cartridges M16 Cartridge Thread 19,1 mm Valve Hex Size 25,4 mm Valve Hex Size 27 - 33 Nm Valve Installation Torque	2-Port 2-Port (Deep) 3-Port 3-Port 4-Port	T-162A T-162DP T-150A T-163A T-30A
Series 1 Cartridges M20 Cartridge Thread 22,2 mm Valve Hex Size 41 - 47 Nm Valve Installation Torque	2-Port 2-Port 3-Port 4-Port 4-Port 6-Port	T-10A T-13A T-11A T-21A T-31A T-61A
Series 2 Cartridges 1"-14 UNS Cartridge Thread 28,6 mm Valve Hex Size 61 - 68 Nm Valve Installation Torque	2-Port 2-Port 3-Port 4-Port 4-Port 4-Port (Dual path) 6-Port 6-Port	T-3A T-5A T-2A T-22A T-32A T-52AD T-52A T-62A
Series 3 Cartridges M36 Cartridge Thread 31,8 mm Valve Hex Size 203 - 217 Nm Valve Installation Torque	2-Port 3-Port 4-Port 4-Port 4-Port (Dual path) 6-Port 6-Port	T-16A T-17A T-23A T-33A T-53AD T-53A T-63A
Series 4 Cartridges M48 Cartridge Thread 41,3 mm Valve Hex Size 474 - 508 Nm Valve Installation Torque	2-Port 2-Port (Undercut) 3-Port 3-Port (Undercut) 4-Port 4-Port (Undercut) 4-Port 4-Port (Dual path) 6-Port 6-Port	T-18A T-18AU T-19A T-19AU T-24A T-24AU T-34A T-54AD T-54A T-64A



This electro-proportional, direct-acting reducer/reliever valve reduces a high primary pressure at the inlet (port 2) to a constant reduced pressure at port 1, with a full flow relief function from port 1 to tank (port 3). The valve is biased to the relieving mode. Energizing the coil connects port 2 to port 1. Increasing the current to the coil will proportionally increase the reduced pressure at port 1. If pressure at port 1 exceeds the setting induced by the coil, pressure at port 1 is relieved to port 3. This valve is open in the transition from reducing to relieving. It provides good pressure control and dynamic response. Optional full manual control is available.

This valve is designed to be used with 740 and 747 Series coils.

TECHNICAL DATA

NOTE: DATA MAY VARY BY CONFIGURATION. SEE CONFIGURATION SECTION.

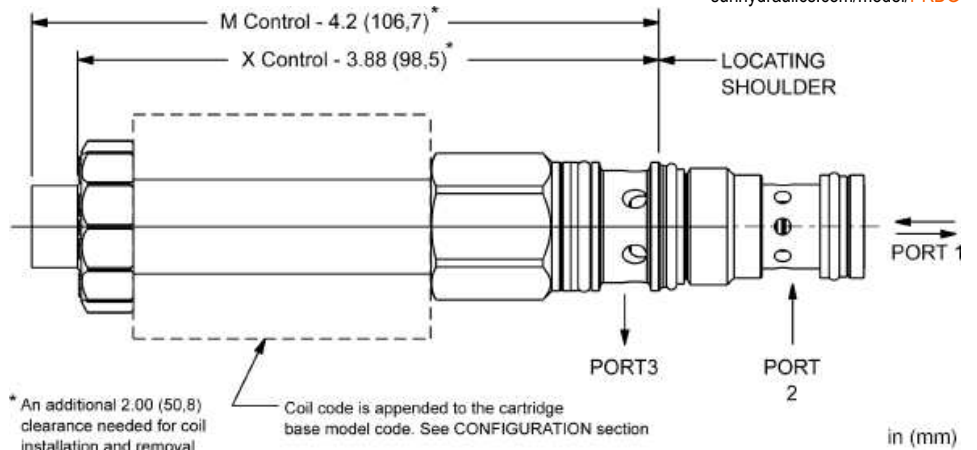
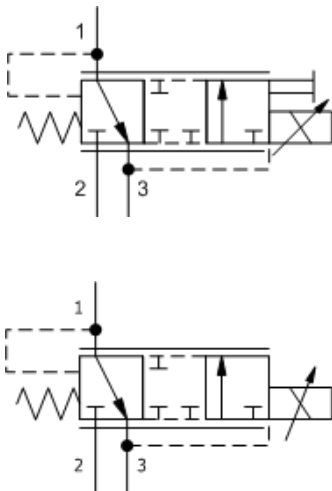
Maximum Operating Pressure	350 bar
Maximum Valve Leakage at 110 SUS (24 cSt)	550 cc/min.
Seal kit - Cartridge	Buna: 990511007
Seal kit - Cartridge	Viton: 990611006

- NOTES**
- Please verify cartridge clearance requirements when choosing a Sun manifold. Different valve controls and coils require different clearances.
 - An additional 2.00 inches (50,8 mm) beyond the valve extension is needed for coil installation and removal.

CONFIGURATION OPTIONS

Model Code Example: PRDFMDN

CONTROL	(M)	OPERATING RANGE	(D)	SEAL MATERIAL	(N)	COIL *
M Manual Override (Standard)	D 50 - 485 psi (3,5 - 33,5 bar)	N Buna-N	No coil			
X No Manual Override	B 100 - 1125 psi (7 - 77,5 bar)	V Viton	* Additional coil options are available			
	E 25 - 250 psi (1,7 - 18 bar)					
	S 10 - 100 psi (0,7 - 7 bar)					



This electro-proportional, direct-acting reducer/reliever valve reduces a high primary pressure at the inlet (port 2) to a constant reduced pressure at port 1, with a full flow relief function from port 1 to tank (port 3). The valve is biased to the relieving mode. Energizing the coil connects port 2 to port 1. Increasing the current to the coil will proportionally increase the reduced pressure at port 1. If pressure at port 1 exceeds the setting induced by the coil, pressure at port 1 is relieved to port 3. This valve is closed in the transition between reducing and relieving resulting in very low consumption of oil. Optional full manual control is available.

This valve is designed to be used with 740 and 747 Series coils.

TECHNICAL DATA

NOTE: DATA MAY VARY BY CONFIGURATION. SEE CONFIGURATION SECTION.

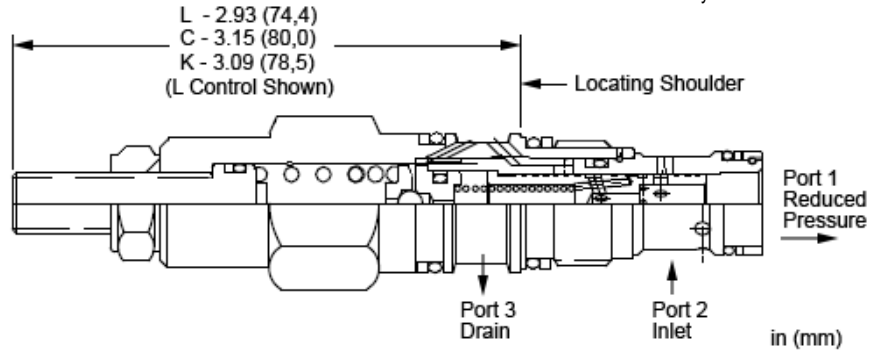
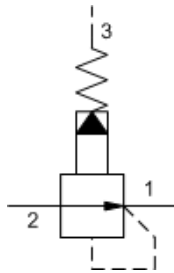
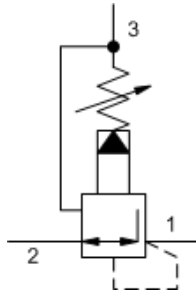
Maximum Operating Pressure	350 bar
Maximum Valve Leakage at 110 SUS (24 cSt)	41 cc/min.
Seal kit - Cartridge	Buna: 990511007
Seal kit - Cartridge	Viton: 990511006

- NOTES**
- Please verify cartridge clearance requirements when choosing a Sun manifold. Different valve controls and coils require different clearances.
 - An additional 2.00 inches (50,8 mm) beyond the valve extension is needed for coil installation and removal.

CONFIGURATION OPTIONS

Model Code Example: PRDGMDN

CONTROL	(M)	OPERATING RANGE	(D)	SEAL MATERIAL	(N)	COIL *
M Manual Override (Standard)		D 50 - 485 psi (3,5 - 33,5 bar)		N Buna-N		No coil
X No Manual Override		B 100 - 1125 psi (7 - 77,5 bar)		V Viton		* Additional coil options are available
		E 25 - 250 psi (1,7 - 18 bar)				



Pilot-operated, pressure reducing/relieving valves reduce a high primary pressure at the inlet (port 2) to a constant reduced pressure at port 1, with a full-flow relief function from port 1 to tank (port 3).

TECHNICAL DATA

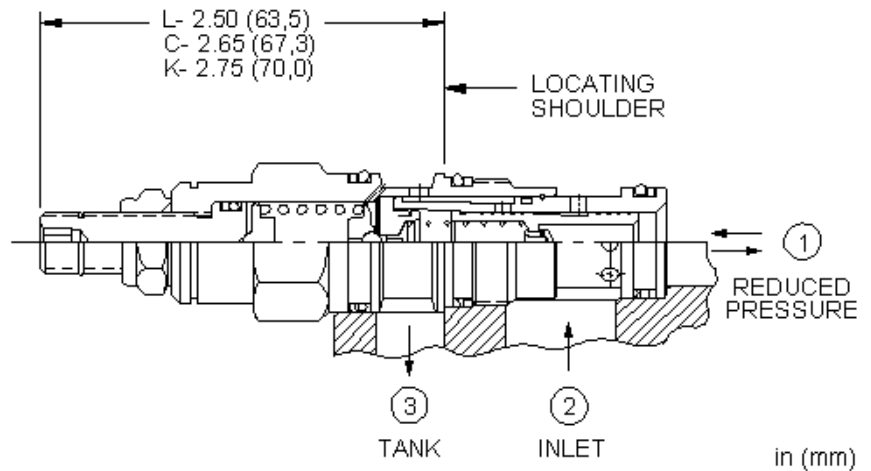
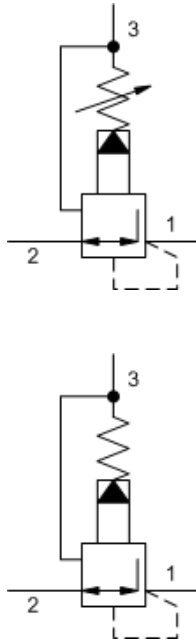
NOTE: DATA MAY VARY BY CONFIGURATION. SEE CONFIGURATION SECTION.

Factory Pressure Settings Established at	blocked control port (dead headed)
Maximum Operating Pressure	350 bar
Control Pilot Flow	0,11 - 0,16 L/min.
Adjustment - No. of CW Turns from Min. to Max. setting	5
Locknut Hex Size	12,7 mm
Locknut Torque	9 - 10 Nm
Seal kit - Cartridge	Buna: 990163007
Seal kit - Cartridge	EPDM: 990163014
Seal kit - Cartridge	Polyurethane: 990163002
Seal kit - Cartridge	Viton: 990163006

NOTES Maximum pressure differentials for spring ranges: A and B are 3000 psi (210 bar) N and Q are 2000 psi (140 bar) W is 5000 psi (350 bar) inlet pressure

CONFIGURATION OPTIONS
Model Code Example: PPBBLAN

CONTROL	(L) ADJUSTMENT RANGE	(A) SEAL MATERIAL	(N) MATERIAL/COATING
L Standard Screw Adjustment	A 75 - 3000 psi (5 - 210 bar), 200 psi (14 bar) Standard Setting	N Buna-N	Standard Material/Coating
C Tamper Resistant - Factory Set	B 75 - 1500 psi (5 - 105 bar), 200 psi (14 bar) Standard Setting	E EPDM	/AP Stainless Steel, Passivated
K Handknob	N 75 - 800 psi (5 - 55 bar), 200 psi (14 bar) Standard Setting	V Viton	/LH Mild Steel, Zinc-Nickel
	Q 75 - 400 psi (5 - 28 bar), 200 psi (14 bar) Standard Setting		
	W 100 - 4500 psi (7 - 315 bar), 200 psi (14 bar) Standard Setting		



Pilot-operated, pressure reducing/relieving valves reduce a high primary pressure at the inlet (port 2) to a constant reduced pressure at port 1, with a full-flow relief function from port 1 to tank (port 3).

TECHNICAL DATA

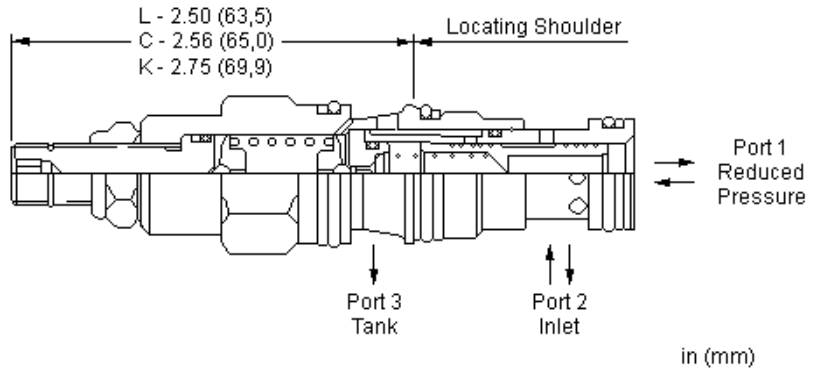
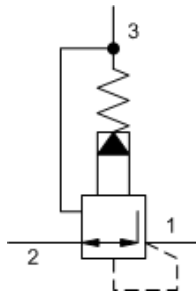
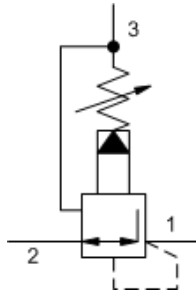
NOTE: DATA MAY VARY BY CONFIGURATION. SEE CONFIGURATION SECTION.

Factory Pressure Settings Established at	blocked control port (dead headed)
Maximum Operating Pressure	350 bar
Control Pilot Flow	0,11 - 0,16 L/min.
Adjustment - No. of CW Turns from Min. to Max. setting	5
Locknut Hex Size	15 mm
Locknut Torque	9 - 10 Nm
Seal kit - Cartridge	Buna: 990011007
Seal kit - Cartridge	EPDM: 990011014
Seal kit - Cartridge	Polyurethane: 990011002
Seal kit - Cartridge	Viton: 990011006

- NOTES**
- Maximum pressure differentials for spring ranges: A and B are 3000 psi (210 bar) N and Q are 2000 psi (140 bar) W is 5000 psi (350 bar) inlet pressure
 - For Series 1 cartridges configured with an O control (panel mount handknob), a .75 in. (19 mm) diameter hole is required in the panel.

CONFIGURATION OPTIONS
Model Code Example: PPDBLAN

CONTROL	(L) ADJUSTMENT RANGE	(A) SEAL MATERIAL	(N) MATERIAL/COATING
L Standard Screw Adjustment	A 100 - 3000 psi (7 - 210 bar), 200 psi (14 bar) Standard Setting	N Buna-N	Standard Material/Coating
C Tamper Resistant - Factory Set	W 150 - 4500 psi (10,5 - 315 bar), 200 psi (14 bar) Standard Setting	V Viton	/AP Stainless Steel, Passivated
K Handknob	B 50 - 1500 psi (3,5 - 105 bar), 200 psi (14 bar) Standard Setting		/LH Mild Steel, Zinc-Nickel
Y Tri-Grip Handknob	N 60 - 800 psi (4 - 55 bar), 200 psi (14 bar) Standard Setting		
	Q 60 - 400 psi (4 - 28 bar), 200 psi (14 bar) Standard Setting		



Pilot-operated, pressure reducing/relieving valves reduce a high primary pressure at the inlet (port 2) to a constant reduced pressure at port 1, with a full-flow relief function from port 1 to tank (port 3).

TECHNICAL DATA

NOTE: DATA MAY VARY BY CONFIGURATION. SEE CONFIGURATION SECTION.

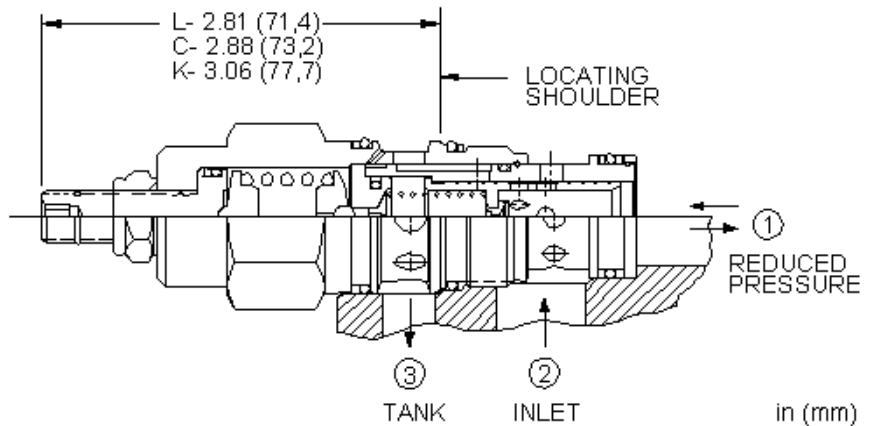
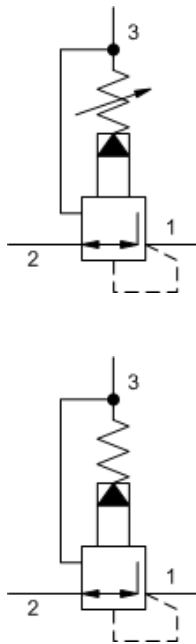
Factory Pressure Settings Established at	blocked control port (dead headed)
Maximum Operating Pressure	350 bar
Control Pilot Flow	0,11 - 0,16 L/min.
Adjustment - No. of CW Turns from Min. to Max. setting	5
Locknut Hex Size	15 mm
Locknut Torque	9 - 10 Nm
Seal kit - Cartridge	Buna: 990011007
Seal kit - Cartridge	Polyurethane: 990011002
Seal kit - Cartridge	Viton: 990011006

NOTES For Series 1 cartridges configured with an O control (panel mount handknob), a .75 in. (19 mm) diameter hole is required in the panel.

CONFIGURATION OPTIONS

Model Code Example: PPDFLAN

CONTROL	(L) ADJUSTMENT RANGE	(A) SEAL MATERIAL	(N)
L Standard Screw Adjustment	A 100 - 3000 psi (7 - 210 bar), 200 psi (14 bar) Standard Setting	N Buna-N	
C Tamper Resistant - Factory Set	B 50 - 1500 psi (3,5 - 105 bar), 200 psi (14 bar) Standard Setting	V Viton	
K Handknob	N 60 - 800 psi (4 - 55 bar), 200 psi (14 bar) Standard Setting		
Y Tri-Grip Handknob	Q 60 - 400 psi (4 - 28 bar), 200 psi (14 bar) Standard Setting		
	W 150 - 4500 psi (10,5 - 315 bar), 200 psi (14 bar) Standard Setting		



Pilot-operated, pressure reducing/relieving valves reduce a high primary pressure at the inlet (port 2) to a constant reduced pressure at port 1, with a full-flow relief function from port 1 to tank (port 3).

TECHNICAL DATA

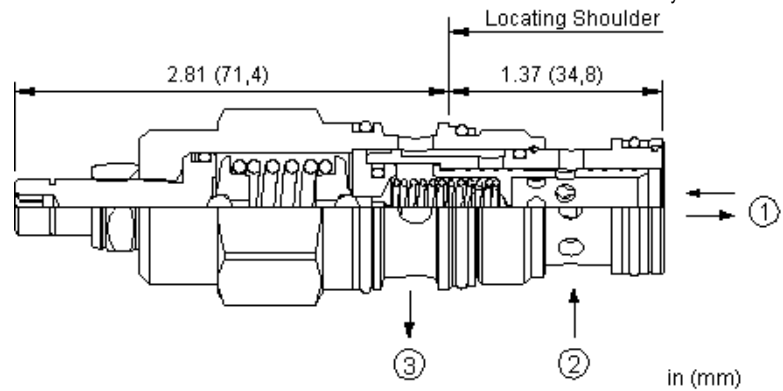
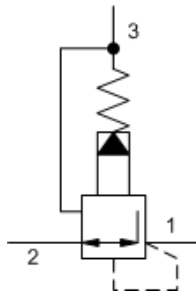
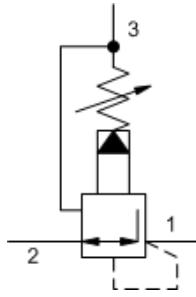
NOTE: DATA MAY VARY BY CONFIGURATION. SEE CONFIGURATION SECTION.

Factory Pressure Settings Established at	blocked control port (dead headed)
Maximum Operating Pressure	350 bar
Control Pilot Flow	0,16 - 0,25 L/min.
Adjustment - No. of CW Turns from Min. to Max. setting	5
Locknut Hex Size	15 mm
Locknut Torque	9 - 10 Nm
Seal kit - Cartridge	Buna: 990202007
Seal kit - Cartridge	EPDM: 990202014
Seal kit - Cartridge	Polyurethane: 990002002
Seal kit - Cartridge	Viton: 990202006

- NOTES**
- Maximum pressure differentials for spring ranges: A and B are 3000 psi (210 bar) N and Q are 2000 psi (140 bar) W is 5000 psi (350 bar) inlet pressure
 - For Series 1 cartridges configured with an O control (panel mount handknob), a .75 in. (19 mm) diameter hole is required in the panel.

CONFIGURATION OPTIONS
Model Code Example: PPFBLAN

CONTROL	(L) ADJUSTMENT RANGE	(A) SEAL MATERIAL	(N) MATERIAL/COATING
L Standard Screw Adjustment	A 100 - 3000 psi (7 - 210 bar), 200 psi (14 bar) Standard Setting	N Buna-N	Standard Material/Coating
C Tamper Resistant - Factory Set		E EPDM	/AP Stainless Steel, Passivated
K Handknob	W 150 - 4500 psi (10,5 - 315 bar), 200 psi (14 bar) Standard Setting	V Viton	/LH Mild Steel, Zinc-Nickel
M Capped Screw Adjustment with Lockwire Holes	B 50 - 1500 psi (3,5 - 105 bar), 200 psi (14 bar) Standard Setting		
Q Capped and Lockwired	N 60 - 800 psi (4 - 55 bar), 200 psi (14 bar) Standard Setting		
W Hex Wrench Adjustment	Q 60 - 400 psi (4 - 28 bar), 200 psi (14 bar) Standard Setting		
Y Tri-Grip Handknob			



Pilot-operated, pressure reducing/relieving valves reduce a high primary pressure at the inlet (port 2) to a constant reduced pressure at port 1, with a full-flow relief function from port 1 to tank (port 3).

TECHNICAL DATA

NOTE: DATA MAY VARY BY CONFIGURATION. SEE CONFIGURATION SECTION.

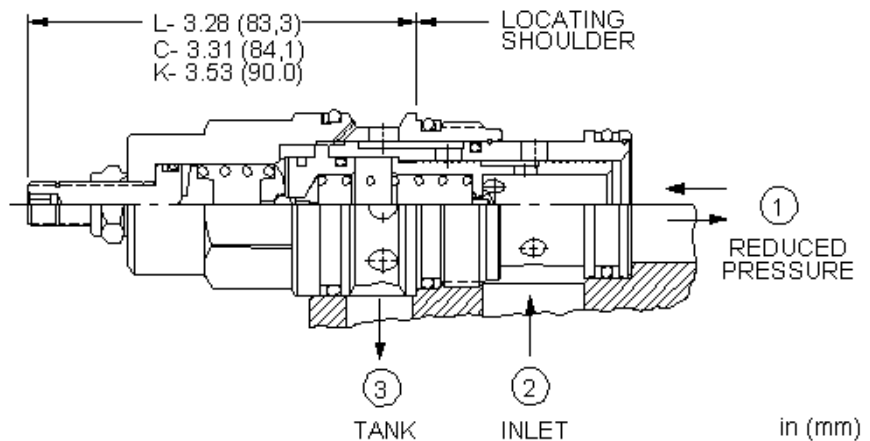
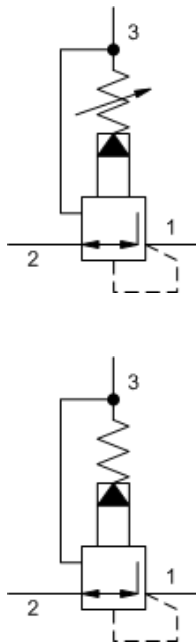
Factory Pressure Settings Established at	blocked control port (dead headed)
Maximum Operating Pressure	350 bar
Control Pilot Flow	0,16 - 0,25 L/min.
Adjustment - No. of CW Turns from Min. to Max. setting	5
Locknut Hex Size	15 mm
Locknut Torque	9 - 10 Nm
Seal kit - Cartridge	Buna: 990202007
Seal kit - Cartridge	Polyurethane: 990002002
Seal kit - Cartridge	Viton: 990202006

NOTES

For Series 1 cartridges configured with an O control (panel mount handknob), a .75 in. (19 mm) diameter hole is required in the panel.

CONFIGURATION OPTIONS
Model Code Example: PPFFLAN

CONTROL	(L) ADJUSTMENT RANGE	(A) SEAL MATERIAL	(N)
L Standard Screw Adjustment	A 100 - 3000 psi (7 - 210 bar), 200 psi (14 bar) Standard Setting	N Buna-N	
C Tamper Resistant - Factory Set		V Viton	
K Handknob	B 50 - 1500 psi (3,5 - 105 bar), 200 psi (14 bar) Standard Setting		
	N 60 - 800 psi (4 - 55 bar), 200 psi (14 bar) Standard Setting		
	Q 60 - 400 psi (4 - 28 bar), 200 psi (14 bar) Standard Setting		
	W 100 - 5000 psi (7 - 350 bar), 200 psi (14 bar) Standard Setting		



Pilot-operated, pressure reducing/relieving valves reduce a high primary pressure at the inlet (port 2) to a constant reduced pressure at port 1, with a full-flow relief function from port 1 to tank (port 3).

TECHNICAL DATA

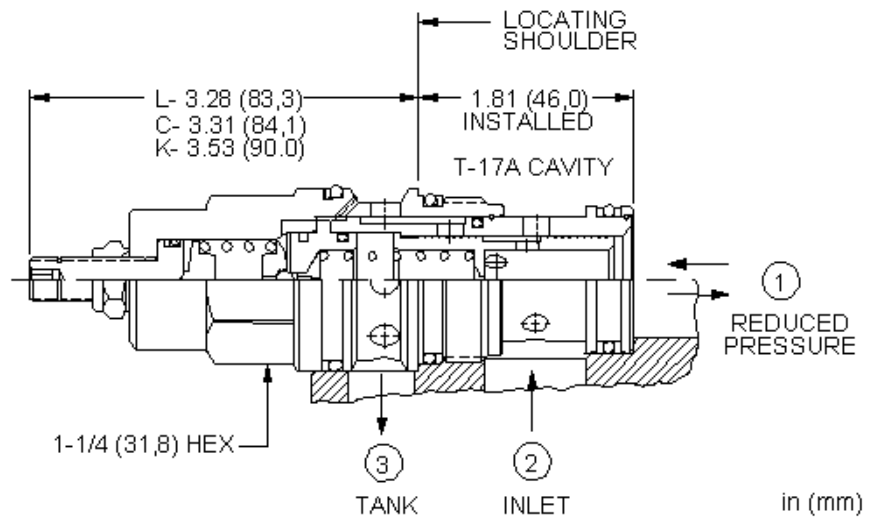
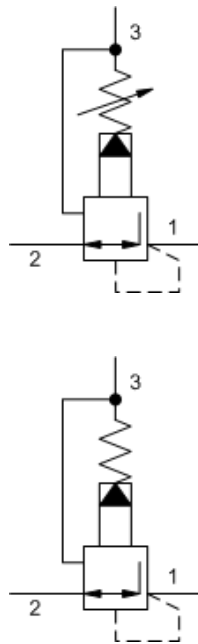
NOTE: DATA MAY VARY BY CONFIGURATION. SEE CONFIGURATION SECTION.

Factory Pressure Settings Established at	blocked control port (dead headed)
Maximum Operating Pressure	350 bar
Control Pilot Flow	0,25 - 0,33 L/min.
Adjustment - No. of CW Turns from Min. to Max. setting	5
Locknut Hex Size	15 mm
Locknut Torque	9 - 10 Nm
Seal kit - Cartridge	Buna: 990017007
Seal kit - Cartridge	EPDM: 990017014
Seal kit - Cartridge	Polyurethane: 990017002
Seal kit - Cartridge	Viton: 990017006

NOTES Maximum pressure differentials for spring ranges: A and B are 3000 psi (210 bar) N and Q are 2000 psi (140 bar) W is 5000 psi (350 bar) inlet pressure

CONFIGURATION OPTIONS
Model Code Example: PPHBLAN

CONTROL	(L)	ADJUSTMENT RANGE	(A)	SEAL MATERIAL	(N)	MATERIAL/COATING
L Standard Screw Adjustment	A	100 - 3000 psi (7 - 210 bar), 200 psi (14 bar) Standard Setting	N	Buna-N	Standard Material/Coating	
C Tamper Resistant - Factory Set	W	150 - 4500 psi (10,5 - 315 bar), 200 psi (14 bar) Standard Setting	E	EPDM	/AP Stainless Steel, Passivated	
K Handknob	B	50 - 1500 psi (3,5 - 105 bar), 200 psi (14 bar) Standard Setting	V	Viton	/LH Mild Steel, Zinc-Nickel	
Y Tri-Grip Handknob	C	150 - 6000 psi (10,5 - 420 bar), 200 psi (14 bar) Standard Setting				
	N	60 - 800 psi (4 - 55 bar), 200 psi (14 bar) Standard Setting				
	Q	60 - 400 psi (4 - 28 bar), 200 psi (14 bar) Standard Setting				



Pilot-operated, pressure reducing/relieving valves reduce a high primary pressure at the inlet (port 2) to a constant reduced pressure at port 1, with a full-flow relief function from port 1 to tank (port 3).

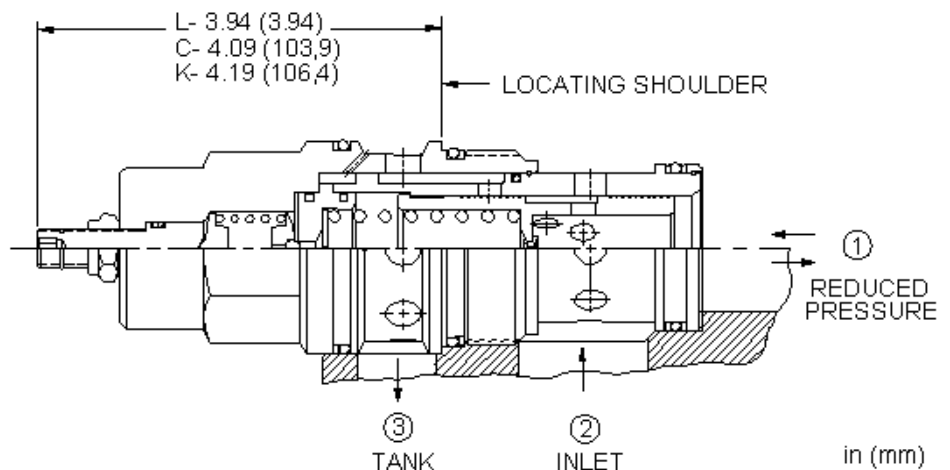
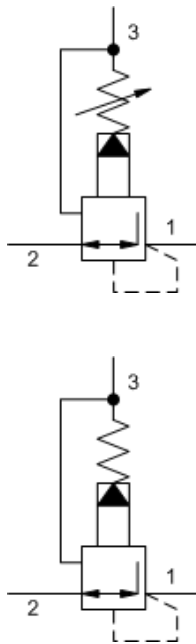
TECHNICAL DATA

NOTE: DATA MAY VARY BY CONFIGURATION. SEE CONFIGURATION SECTION.

Factory Pressure Settings Established at	blocked control port (dead headed)
Maximum Operating Pressure	350 bar
Control Pilot Flow	0,25 - 0,33 L/min.
Adjustment - No. of CW Turns from Min. to Max. setting	5
Locknut Hex Size	15 mm
Locknut Torque	9 - 10 Nm
Seal kit - Cartridge	Buna: 990017007
Seal kit - Cartridge	Polyurethane: 990017002
Seal kit - Cartridge	Viton: 990017006

CONFIGURATION OPTIONS
Model Code Example: PPHFLAN

CONTROL	(L)	ADJUSTMENT RANGE	(A)	SEAL MATERIAL	(N)
L Standard Screw Adjustment	A	100 - 3000 psi (7 - 210 bar), 200 psi (14 bar) Standard Setting	N	Buna-N	
C Tamper Resistant - Factory Set	B	50 - 1500 psi (3,5 - 105 bar), 200 psi (14 bar) Standard Setting	V	Viton	
K Handknob	C	150 - 6000 psi (10,5 - 420 bar), 200 psi (14 bar) Standard Setting			
Q Capped and Lockwired	D	25 - 800 psi (1,7 - 55 bar), 200 psi (14 bar) Standard Setting			
	E	25 - 400 psi (1,7 - 28 bar), 200 psi (14 bar) Standard Setting			
	H	30 - 3000 psi (2 - 210 bar), 200 psi (14 bar) Standard Setting			
	N	60 - 800 psi (4 - 55 bar), 200 psi (14 bar) Standard Setting			
	Q	60 - 400 psi (4 - 28 bar), 200 psi (14 bar) Standard Setting			
	W	150 - 4500 psi (10,5 - 315 bar), 200 psi (14 bar) Standard Setting			



Pilot-operated, pressure reducing/relieving valves reduce a high primary pressure at the inlet (port 2) to a constant reduced pressure at port 1, with a full-flow relief function from port 1 to tank (port 3).

TECHNICAL DATA

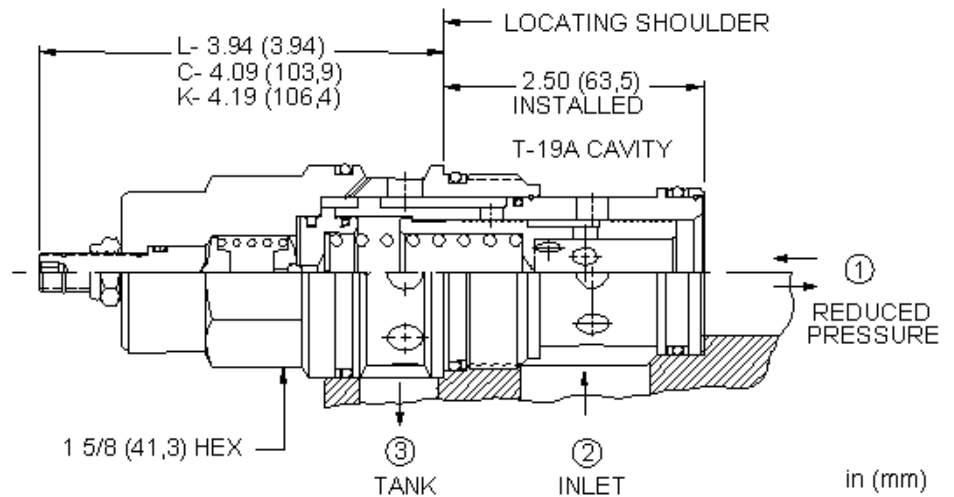
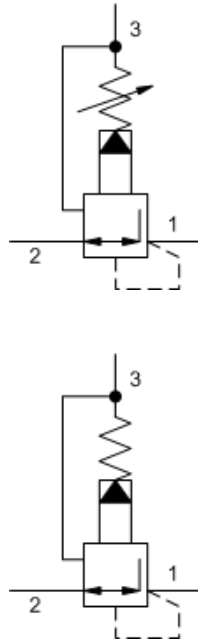
NOTE: DATA MAY VARY BY CONFIGURATION. SEE CONFIGURATION SECTION.

Factory Pressure Settings Established at	blocked control port (dead headed)
Maximum Operating Pressure	350 bar
Control Pilot Flow	0,25 - 0,33 L/min.
Adjustment - No. of CW Turns from Min. to Max. setting	5
Locknut Hex Size	15 mm
Locknut Torque	9 - 10 Nm
Seal kit - Cartridge	Buna: 990019007
Seal kit - Cartridge	Polyurethane: 990019002
Seal kit - Cartridge	Viton: 990019006

NOTES Maximum pressure differentials for spring ranges: A and B are 3000 psi (210 bar) N and Q are 2000 psi (140 bar) W is 5000 psi (350 bar) inlet pressure

CONFIGURATION OPTIONS
Model Code Example: PPJBLAN

CONTROL	(L) ADJUSTMENT RANGE	(A) SEAL MATERIAL	(N) MATERIAL/COATING
L Standard Screw Adjustment	A 100 - 3000 psi (7 - 210 bar), 200 psi (14 bar) Standard Setting	N Buna-N	Standard Material/Coating
C Tamper Resistant - Factory Set		E EPDM	/AP Stainless Steel, Passivated
K Handknob	W 150 - 4500 psi (10,5 - 315 bar), 200 psi (14 bar) Standard Setting	V Viton	/LH Mild Steel, Zinc-Nickel
W Hex Wrench Adjustment	B 50 - 1500 psi (3,5 - 105 bar), 200 psi (14 bar) Standard Setting		
Y Tri-Grip Handknob	N 60 - 800 psi (4 - 55 bar), 200 psi (14 bar) Standard Setting		
	Q 60 - 400 psi (4 - 28 bar), 200 psi (14 bar) Standard Setting		



Pilot-operated, pressure reducing/relieving valves reduce a high primary pressure at the inlet (port 2) to a constant reduced pressure at port 1, with a full-flow relief function from port 1 to tank (port 3).

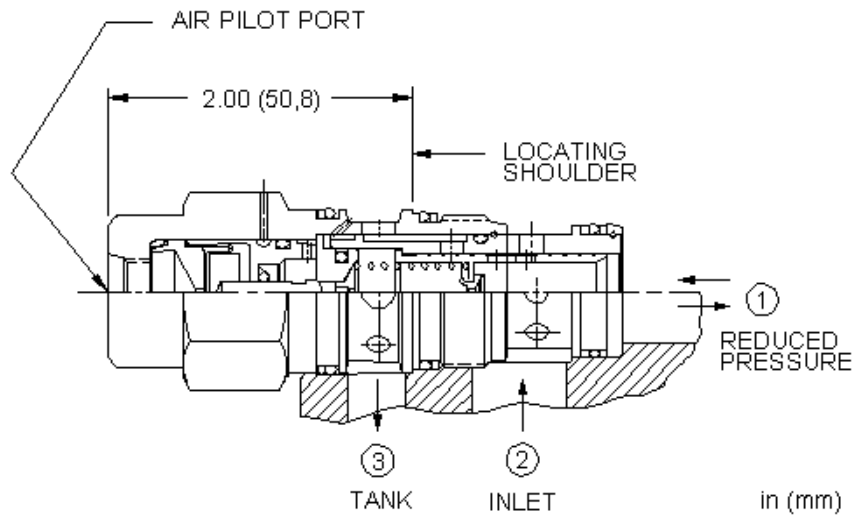
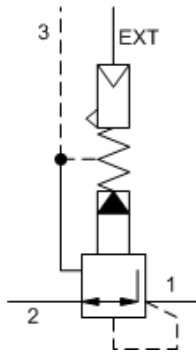
TECHNICAL DATA

NOTE: DATA MAY VARY BY CONFIGURATION. SEE CONFIGURATION SECTION.

Factory Pressure Settings Established at	blocked control port (dead headed)
Maximum Operating Pressure	350 bar
Control Pilot Flow	0,25 - 0,33 L/min.
Adjustment - No. of CW Turns from Min. to Max. setting	5
Locknut Hex Size	15 mm
Locknut Torque	9 - 10 Nm
Seal kit - Cartridge	Buna: 990019007
Seal kit - Cartridge	Polyurethane: 990019002
Seal kit - Cartridge	Viton: 990019006

CONFIGURATION OPTIONS
Model Code Example: PPJFLAN

CONTROL	(L)	ADJUSTMENT RANGE	(A)	SEAL MATERIAL	(N)
L Standard Screw Adjustment	A	100 - 3000 psi (7 - 210 bar), 200 psi (14 bar) Standard Setting	N	Buna-N	
C Tamper Resistant - Factory Set	B	50 - 1500 psi (3,5 - 105 bar), 200 psi (14 bar) Standard Setting	V	Viton	
K Handknob	D	25 - 800 psi (1,7 - 55 bar), 200 psi (14 bar) Standard Setting			
	E	25 - 400 psi (1,7 - 28 bar), 200 psi (14 bar) Standard Setting			
	H	30 - 3000 psi (2 - 210 bar), 200 psi (14 bar) Standard Setting			
	N	60 - 800 psi (4 - 55 bar), 200 psi (14 bar) Standard Setting			
	Q	60 - 400 psi (4 - 28 bar), 200 psi (14 bar) Standard Setting			
	W	150 - 4500 psi (10,5 - 315 bar), 200 psi (14 bar) Standard Setting			



Air-controlled, pilot-operated pressure reducing/relieving valves use compressed air over a diaphragm instead of an adjustable spring to control the setting. These valves reduce a high primary pressure at the inlet (port 2) to a constant reduced pressure at port 1, with a full-flow relief function from port 1 to tank (port 3). The air signal is supplied through a port in the hex-end of the cartridge and the hydraulic setting is directly proportional to the air setting at a ratio of 20:1 (hydraulic:air).

TECHNICAL DATA

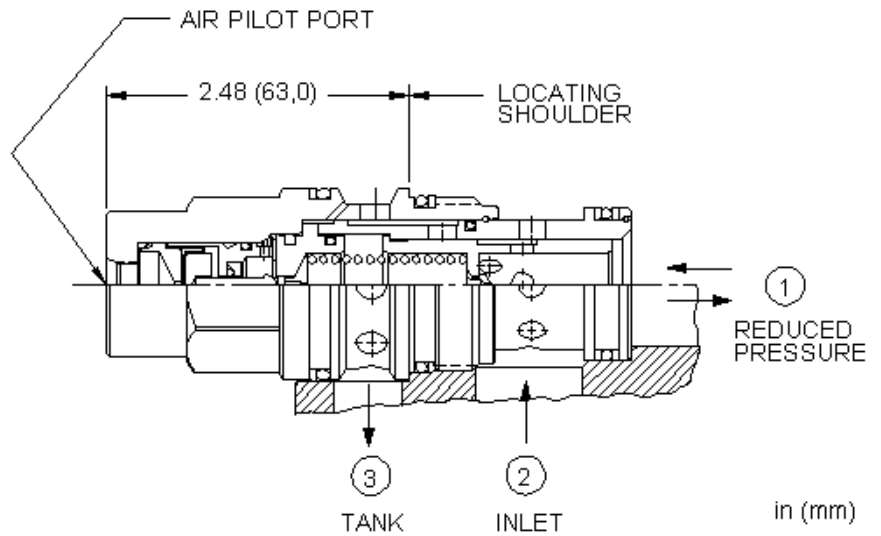
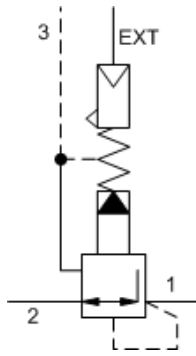
NOTE: DATA MAY VARY BY CONFIGURATION. SEE CONFIGURATION SECTION.

Pilot Ratio	20:1
Maximum Operating Pressure	140 bar
Control Pilot Flow	0,16 - 0,25 L/min.
Maximum Air Pressure	10,5 bar
Locknut Hex Size	15 mm
Locknut Torque	9 - 10 Nm
Seal kit - Cartridge	Buna: 990202007
Seal kit - Cartridge	Polyurethane: 990002002
Seal kit - Cartridge	Viton: 990202006

CONFIGURATION OPTIONS

Model Code Example: PPFCABN

CONTROL	(A) OPERATING RANGE	(B) SEAL MATERIAL	(N)
A External 1/4 NPTF Port	B 50 - 1500 psi (3,5 - 105 bar)	N Buna-N	V Viton



Air-controlled, pilot-operated pressure reducing/relieving valves use compressed air over a diaphragm instead of an adjustable spring to control the setting. These valves reduce a high primary pressure at the inlet (port 2) to a constant reduced pressure at port 1, with a full-flow relief function from port 1 to tank (port 3). The air signal is supplied through a port in the hex-end of the cartridge and the hydraulic setting is directly proportional to the air setting at a ratio of 20:1 (hydraulic:air).

TECHNICAL DATA

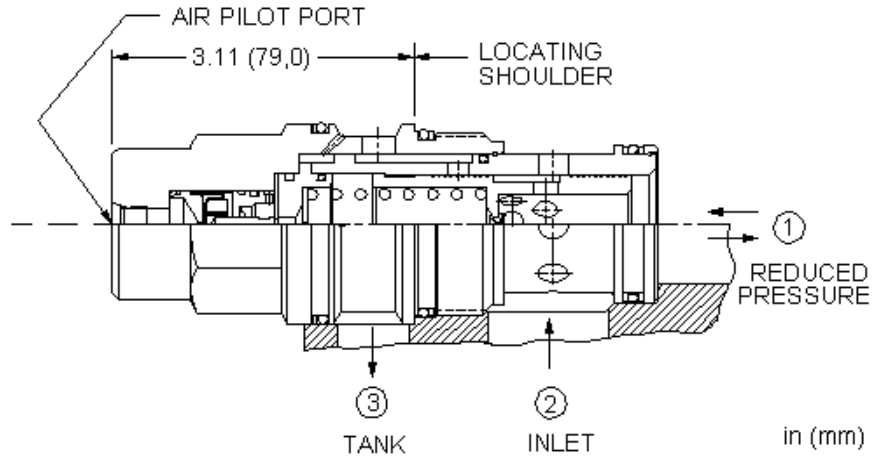
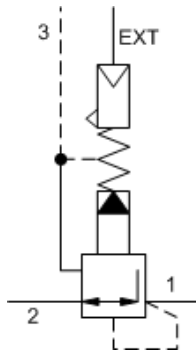
NOTE: DATA MAY VARY BY CONFIGURATION. SEE CONFIGURATION SECTION.

Pilot Ratio	20:1
Maximum Operating Pressure	140 bar
Control Pilot Flow	0,25 - 0,33 L/min.
Maximum Air Pressure	10,5 bar
Locknut Hex Size	15 mm
Locknut Torque	9 - 10 Nm
Seal kit - Cartridge	Buna: 990017007
Seal kit - Cartridge	Polyurethane: 990017002
Seal kit - Cartridge	Viton: 990017006

CONFIGURATION OPTIONS

Model Code Example: PPHCBBN

CONTROL	(B)	OPERATING RANGE	(B)	SEAL MATERIAL	(N)
B External 4-SAE Port		B 50 - 1500 psi (3,5 - 105 bar)		N Buna-N	
				V Viton	



Air-controlled, pilot-operated pressure reducing/relieving valves use compressed air over a diaphragm instead of an adjustable spring to control the setting. These valves reduce a high primary pressure at the inlet (port 2) to a constant reduced pressure at port 1, with a full-flow relief function from port 1 to tank (port 3). The air signal is supplied through a port in the hex-end of the cartridge and the hydraulic setting is directly proportional to the air setting at a ratio of 20:1 (hydraulic:air).

TECHNICAL DATA

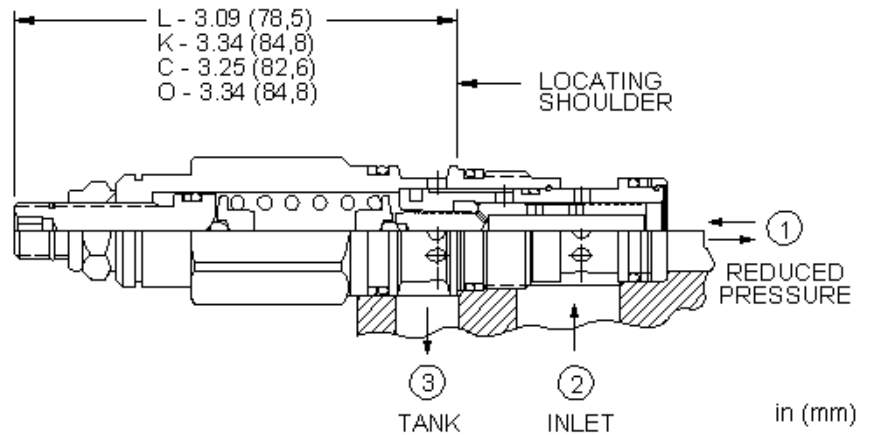
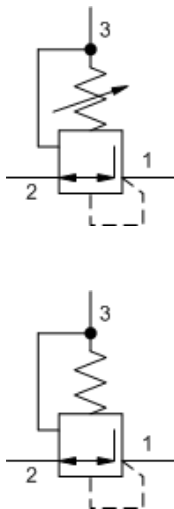
NOTE: DATA MAY VARY BY CONFIGURATION. SEE CONFIGURATION SECTION.

Pilot Ratio	20:1
Maximum Operating Pressure	140 bar
Control Pilot Flow	0,25 - 0,33 L/min.
Maximum Air Pressure	10,5 bar
Locknut Hex Size	15 mm
Locknut Torque	9 - 10 Nm
Seal kit - Cartridge	Buna: 990019007
Seal kit - Cartridge	Polyurethane: 990019002
Seal kit - Cartridge	Viton: 990019006

CONFIGURATION OPTIONS

Model Code Example: PPJCBBN

CONTROL	(B) OPERATING RANGE	(B) SEAL MATERIAL	(N)
B External 4- <i>SAE</i> Port	B 50 - 1500 psi (3,5 - 105 bar)	N Buna-N V Viton	



Direct-acting, pressure reducing/relieving valves reduce a high primary pressure at the inlet (port 2) to a constant reduced pressure at port 1, with a full-flow relief function from port 1 to tank (port 3). These valves incorporate a damped construction for stable operation allowing the use of high reduced pressure.

TECHNICAL DATA

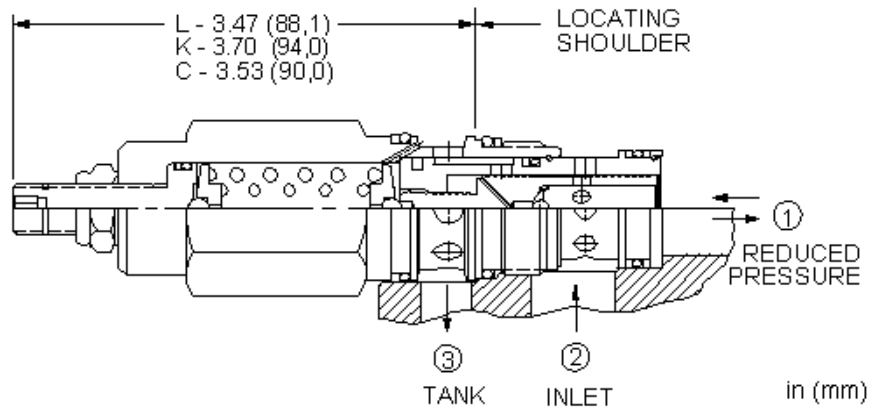
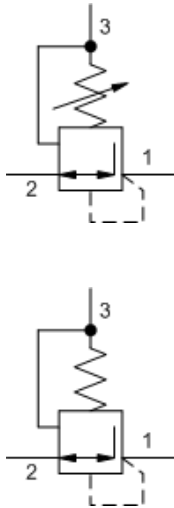
NOTE: DATA MAY VARY BY CONFIGURATION. SEE CONFIGURATION SECTION.

Factory Pressure Settings Established at	0.25 gpm
Maximum Operating Pressure	350 bar
Maximum Valve Leakage at 110 SUS (24 cSt)	30 cc/min.
Adjustment - No. of CW Turns from Min. to Max. setting	5
Locknut Hex Size	15 mm
Locknut Torque	9 - 10 Nm
Seal kit - Cartridge	Buna: 990011007
Seal kit - Cartridge	EPDM: 990011014
Seal kit - Cartridge	Polyurethane: 990011002
Seal kit - Cartridge	Viton: 990011006

NOTES For Series 1 cartridges configured with an O control (panel mount handknob), a .75 in. (19 mm) diameter hole is required in the panel.

CONFIGURATION OPTIONS
Model Code Example: PRDBLAN

CONTROL	(L)	ADJUSTMENT RANGE	(A)	SEAL MATERIAL	(N)	MATERIAL/COATING
L Standard Screw Adjustment	A	500 - 3000 psi (35 - 210 bar), 700 psi (50 bar) Standard Setting	N	Buna-N		Standard Material/Coating
C Tamper Resistant - Factory Set	W	750 - 4500 psi (50 - 315 bar), 1000 psi (70 bar) Standard Setting	E	EPDM		/AP Stainless Steel, Passivated
K Handknob	B	50 - 1500 psi (3,5 - 105 bar), 200 psi (14 bar) Standard Setting	V	Viton		/LH Mild Steel, Zinc-Nickel
Y Tri-Grip Handknob	D	25 - 800 psi (1,7 - 55 bar), 200 psi (14 bar) Standard Setting				
	E	25 - 400 psi (1,7 - 28 bar), 200 psi (14 bar) Standard Setting				
	S	25 - 200 psi (1,7 - 14 bar), 100 psi (7 bar) Standard Setting				



Direct-acting, pressure reducing/relieving valves reduce a high primary pressure at the inlet (port 2) to a constant reduced pressure at port 1, with a full-flow relief function from port 1 to tank (port 3). These valves incorporate a damped construction for stable operation allowing the use of high reduced pressure.

TECHNICAL DATA

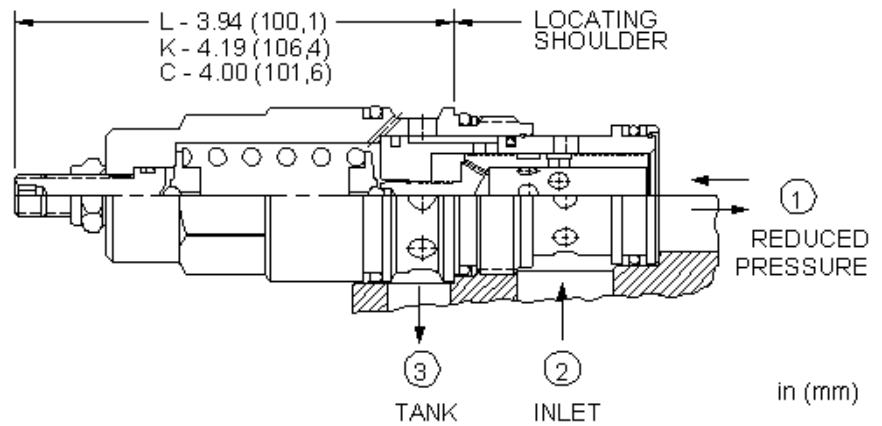
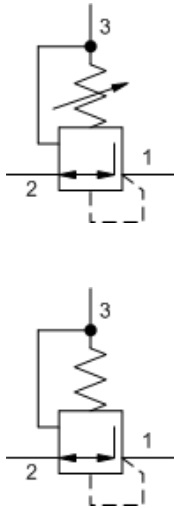
NOTE: DATA MAY VARY BY CONFIGURATION. SEE CONFIGURATION SECTION.

Factory Pressure Settings Established at	0.25 gpm
Maximum Operating Pressure	350 bar
Maximum Valve Leakage at 110 SUS (24 cSt)	50 cc/min.
Adjustment - No. of CW Turns from Min. to Max. setting	5
Locknut Hex Size	15 mm
Locknut Torque	9 - 10 Nm
Seal kit - Cartridge	Buna: 990202007
Seal kit - Cartridge	Polyurethane: 990002002
Seal kit - Cartridge	Viton: 990202006

CONFIGURATION OPTIONS

Model Code Example: PRFBLAN

CONTROL	(L) ADJUSTMENT RANGE	(A) SEAL MATERIAL	(N) MATERIAL/COATING
L Standard Screw Adjustment	A 750 - 3000 psi (50 - 210 bar), 1000 psi (70 bar) Standard Setting	N Buna-N	Standard Material/Coating
C Tamper Resistant - Factory Set	B 300 - 1500 psi (20 - 105 bar), 500 psi (35 bar) Standard Setting	E EPDM	/AP Stainless Steel, Passivated
K Handknob	D 200 - 800 psi (14 - 55 bar), 400 psi (28 bar) Standard Setting	V Viton	/LH Mild Steel, Zinc-Nickel
	E 100 - 400 psi (7 - 28 bar), 200 psi (14 bar) Standard Setting		
	S 50 - 200 psi (3,5 - 14 bar), 100 psi (7 bar) Standard Setting		
	W 1000 - 4500 psi (70 - 315 bar), 1000 psi (70 bar) Standard Setting		



Direct-acting, pressure reducing/relieving valves reduce a high primary pressure at the inlet (port 2) to a constant reduced pressure at port 1, with a full-flow relief function from port 1 to tank (port 3). These valves incorporate a damped construction for stable operation allowing the use of high reduced pressure.

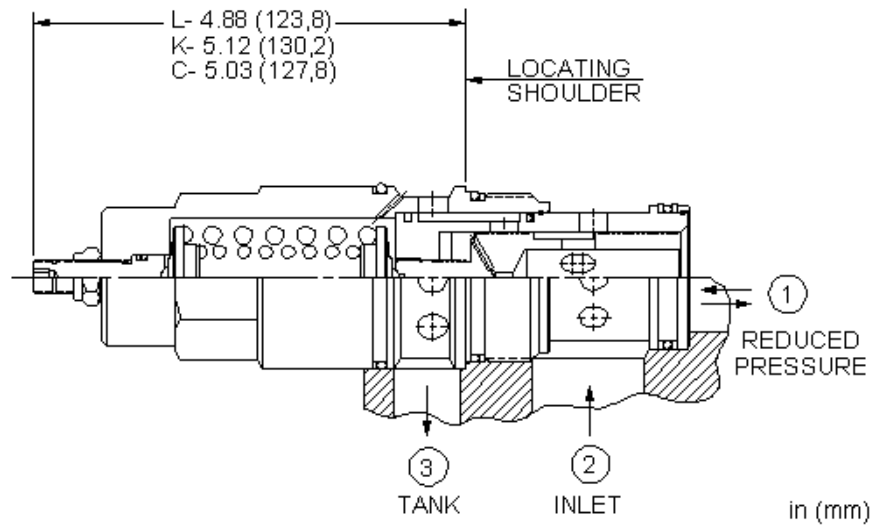
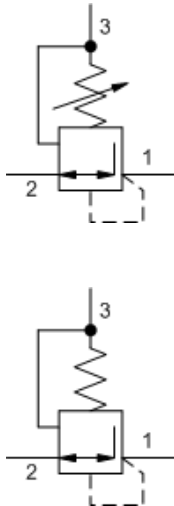
TECHNICAL DATA

NOTE: DATA MAY VARY BY CONFIGURATION. SEE CONFIGURATION SECTION.

Factory Pressure Settings Established at	0.25 gpm
Maximum Operating Pressure	350 bar
Maximum Valve Leakage at 110 SUS (24 cSt)	65 cc/min.
Adjustment - No. of CW Turns from Min. to Max. setting	5
Locknut Hex Size	15 mm
Locknut Torque	9 - 10 Nm
Seal kit - Cartridge	Buna: 990017007
Seal kit - Cartridge	EPDM: 990017014
Seal kit - Cartridge	Polyurethane: 990017002
Seal kit - Cartridge	Viton: 990017006

CONFIGURATION OPTIONS
Model Code Example: PRHBLAN

CONTROL	(L) ADJUSTMENT RANGE	(A) SEAL MATERIAL	(N) MATERIAL/COATING
L Standard Screw Adjustment	A 750 - 3000 psi (50 - 210 bar), 1000 psi (70 bar) Standard Setting	N Buna-N	Standard Material/Coating
C Tamper Resistant - Factory Set	B 300 - 1500 psi (20 - 105 bar), 500 psi (35 bar) Standard Setting	E EPDM	/AP Stainless Steel, Passivated
K Handknob	D 200 - 800 psi (14 - 55 bar), 400 psi (28 bar) Standard Setting	V Viton	/LH Mild Steel, Zinc-Nickel
	E 100 - 400 psi (7 - 28 bar), 200 psi (14 bar) Standard Setting		
	S 50 - 200 psi (3,5 - 14 bar), 100 psi (7 bar) Standard Setting		
	W 1100 - 4500 psi (76 - 315 bar), 1100 psi (76 bar) Standard Setting		



Direct-acting, pressure reducing/relieving valves reduce a high primary pressure at the inlet (port 2) to a constant reduced pressure at port 1, with a full-flow relief function from port 1 to tank (port 3). These valves incorporate a damped construction for stable operation allowing the use of high reduced pressure.

TECHNICAL DATA

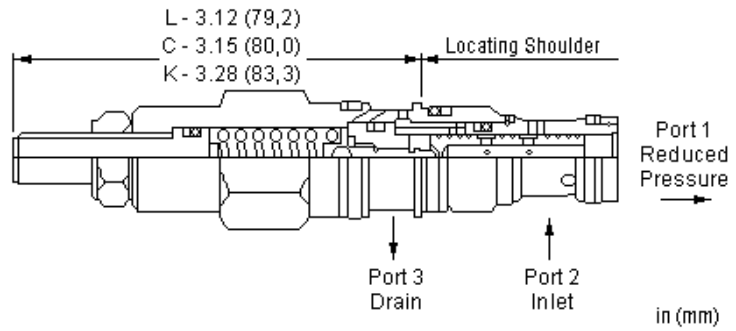
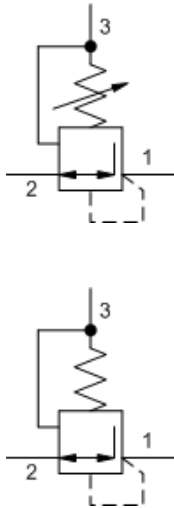
NOTE: DATA MAY VARY BY CONFIGURATION. SEE CONFIGURATION SECTION.

Factory Pressure Settings Established at	0.25 gpm
Maximum Operating Pressure	350 bar
Maximum Valve Leakage at 110 SUS (24 cSt)	80 cc/min.
Adjustment - No. of CW Turns from Min. to Max. setting	5
Locknut Hex Size	15 mm
Locknut Torque	9 - 10 Nm
Seal kit - Cartridge	Buna: 990019007
Seal kit - Cartridge	Polyurethane: 990019002
Seal kit - Cartridge	Viton: 990019006

CONFIGURATION OPTIONS

Model Code Example: PRJBLAN

CONTROL	(L) ADJUSTMENT RANGE	(A) SEAL MATERIAL	(N) MATERIAL/COATING
L Standard Screw Adjustment	A 750 - 3000 psi (50 - 210 bar), 1000 psi (70 bar) Standard Setting	N Buna-N	Standard Material/Coating
C Tamper Resistant - Factory Set	B 300 - 1500 psi (20 - 105 bar), 500 psi (35 bar) Standard Setting	E EPDM	/AP Stainless Steel, Passivated
K Handknob	D 200 - 800 psi (14 - 55 bar), 400 psi (28 bar) Standard Setting	V Viton	
	E 100 - 400 psi (7 - 28 bar), 200 psi (14 bar) Standard Setting		
	S 50 - 200 psi (3,5 - 14 bar), 100 psi (7 bar) Standard Setting		
	W 1100 - 4500 psi (76 - 315 bar), 1100 psi (76 bar) Standard Setting		



Direct-acting, pressure reducing valves reduce a high primary pressure at the inlet (port 2) to a constant reduced pressure at port 1. These valves incorporate a damped construction for stable operation allowing the use of high reduced pressure. This valve is open in the transition from reducing to relieving. It provides good pressure control and dynamic response.

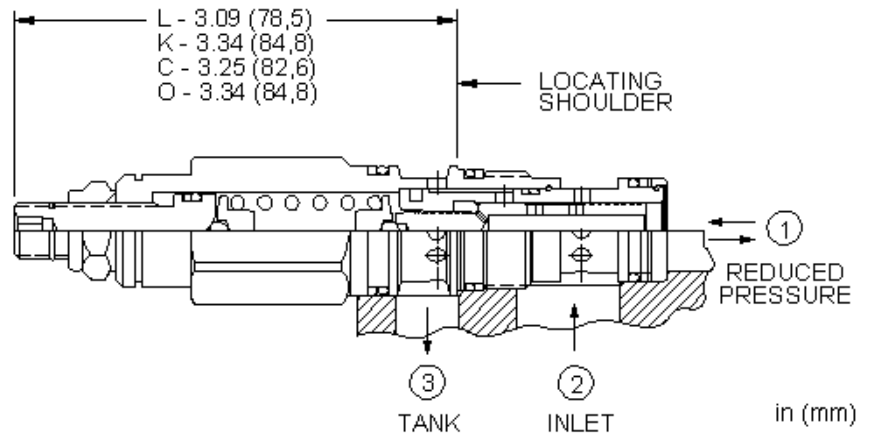
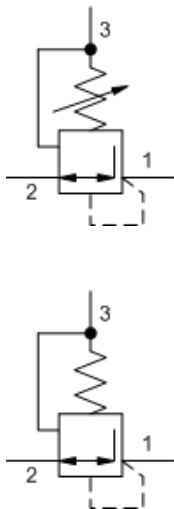
TECHNICAL DATA

NOTE: DATA MAY VARY BY CONFIGURATION. SEE CONFIGURATION SECTION.

Factory Pressure Settings Established at	0.25 gpm
Maximum Operating Pressure	350 bar
Maximum Valve Leakage at 110 SUS (24 cSt)	330 cc/min.
Adjustment - No. of CW Turns from Min. to Max. setting	7
Locknut Hex Size	12,7 mm
Locknut Torque	9 - 10 Nm
Seal kit - Cartridge	Buna: 990163007
Seal kit - Cartridge	Viton: 990163006

CONFIGURATION OPTIONS
Model Code Example: PRBCLAN

CONTROL	(L)	ADJUSTMENT RANGE	(A)	SEAL MATERIAL	(N)
L Standard Screw Adjustment		A 500 - 3000 psi (35 - 210 bar), 700 psi (50 bar) Standard Setting		N Buna-N	
C Tamper Resistant - Factory Set		B 50 - 1500 psi (3,5 - 105 bar), 200 psi (14 bar) Standard Setting		V Viton	
K Handknob		D 25 - 800 psi (1,7 - 55 bar), 200 psi (14 bar) Standard Setting			
		E 25 - 400 psi (1,7 - 28 bar), 200 psi (14 bar) Standard Setting			
		S 25 - 200 psi (1,7 - 14 bar), 100 psi (7 bar) Standard Setting			
		W 750 - 4500 psi (50 - 315 bar), 1000 psi (70 bar) Standard Setting			



Direct-acting, pressure reducing valves reduce a high primary pressure at the inlet (port 2) to a constant reduced pressure at port 1. These valves incorporate a damped construction for stable operation allowing the use of high reduced pressure. This valve is open in the transition from reducing to relieving. It provides good pressure control and dynamic response.

TECHNICAL DATA

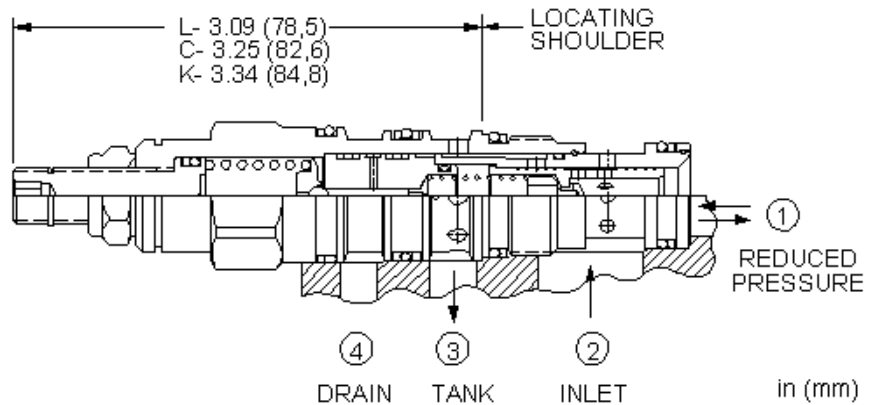
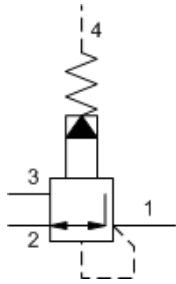
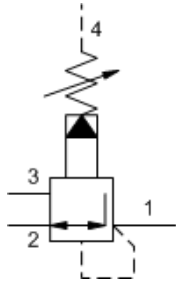
NOTE: DATA MAY VARY BY CONFIGURATION. SEE CONFIGURATION SECTION.

Factory Pressure Settings Established at	0.25 gpm
Maximum Operating Pressure	350 bar
Maximum Valve Leakage at 110 SUS (24 cSt)	330 cc/min.
Adjustment - No. of CW Turns from Min. to Max. setting	5
Locknut Hex Size	15 mm
Locknut Torque	9 - 10 Nm
Seal kit - Cartridge	Buna: 990011007
Seal kit - Cartridge	EPDM: 990011014
Seal kit - Cartridge	Polyurethane: 990011002
Seal kit - Cartridge	Viton: 990011006

NOTES For Series 1 cartridges configured with an O control (panel mount handknob), a .75 in. (19 mm) diameter hole is required in the panel.

CONFIGURATION OPTIONS
Model Code Example: PRDCLAN

CONTROL	(L) ADJUSTMENT RANGE	(A) SEAL MATERIAL	(N) MATERIAL/COATING
L Standard Screw Adjustment	A 500 - 3000 psi (35 - 210 bar), 700 psi (50 bar) Standard Setting	N Buna-N	Standard Material/Coating
C Tamper Resistant - Factory Set	B 50 - 1500 psi (3,5 - 105 bar), 200 psi (14 bar) Standard Setting	E EPDM	/AP Stainless Steel, Passivated
K Handknob	D 25 - 800 psi (1,7 - 55 bar), 200 psi (14 bar) Standard Setting	V Viton	
O Handknob with Panel Mount	E 25 - 400 psi (1,7 - 28 bar), 200 psi (14 bar) Standard Setting		
	S 25 - 200 psi (1,7 - 14 bar), 100 psi (7 bar) Standard Setting		
	W 750 - 4500 psi (50 - 315 bar), 1000 psi (70 bar) Standard Setting		



Externally drained, pilot-operated pressure reducing/relieving valves reduce a high primary pressure at the inlet (port 2) to a constant reduced pressure at port 1, with a full-flow relief function from port 1 to tank (port 3). Draining the pilot section at port 4 makes these valves insensitive to pressure at tank (port 3) and provides a means for remote control by pilot or 2-way valves.

TECHNICAL DATA

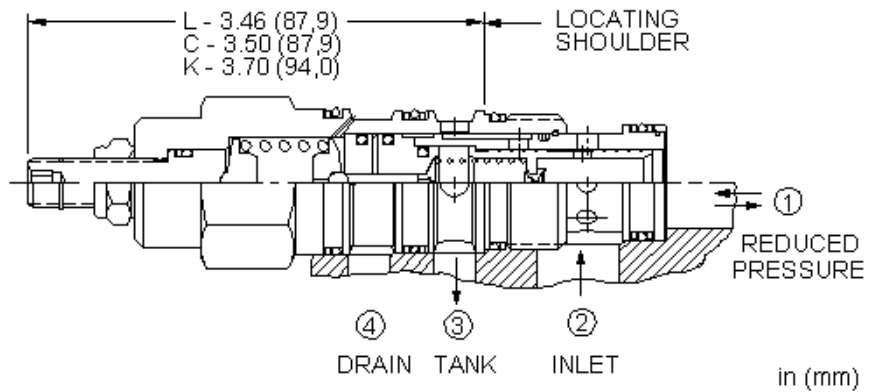
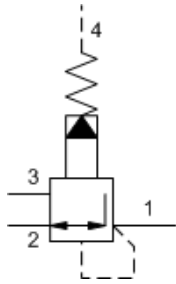
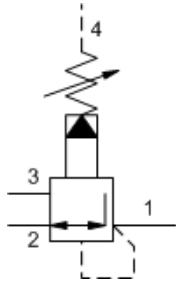
NOTE: DATA MAY VARY BY CONFIGURATION. SEE CONFIGURATION SECTION.

Factory Pressure Settings Established at	blocked control port (dead headed)
Maximum Operating Pressure	350 bar
Control Pilot Flow	0,11 - 0,16 L/min.
Adjustment - No. of CW Turns from Min. to Max. setting	5
Locknut Hex Size	15 mm
Locknut Torque	9 - 10 Nm
Seal kit - Cartridge	Buna: 990021007
Seal kit - Cartridge	EPDM: 990021014
Seal kit - Cartridge	Polyurethane: 990021002
Seal kit - Cartridge	Viton: 990021006

NOTES Maximum pressure differentials for spring ranges: A and B are 3000 psi (210 bar) D and E are 2000 psi (140 bar) W is 5000 psi (350 bar) inlet pressure

CONFIGURATION OPTIONS
Model Code Example: PVDALAN

CONTROL	(L)	ADJUSTMENT RANGE	(A)	SEAL MATERIAL	(N)	MATERIAL/COATING
L Standard Screw Adjustment	A	100 - 3000 psi (7 - 210 bar), 200 psi (14 bar) Standard Setting	N	Buna-N		Standard Material/Coating
C Tamper Resistant - Factory Set	B	50 - 1500 psi (3,5 - 105 bar), 200 psi (14 bar) Standard Setting	V	Viton		/AP Stainless Steel, Passivated
K Handknob	D	25 - 800 psi (1,7 - 55 bar), 200 psi (14 bar) Standard Setting				/LH Mild Steel, Zinc-Nickel
Y Tri-Grip Handknob	E	25 - 400 psi (1,7 - 28 bar), 200 psi (14 bar) Standard Setting				
	W	150 - 4500 psi (10,5 - 315 bar), 200 psi (14 bar) Standard Setting				



Externally drained, pilot-operated pressure reducing/relieving valves reduce a high primary pressure at the inlet (port 2) to a constant reduced pressure at port 1, with a full-flow relief function from port 1 to tank (port 3). Draining the pilot section at port 4 makes these valves insensitive to pressure at tank (port 3) and provides a means for remote control by pilot or 2-way valves.

TECHNICAL DATA

NOTE: DATA MAY VARY BY CONFIGURATION. SEE CONFIGURATION SECTION.

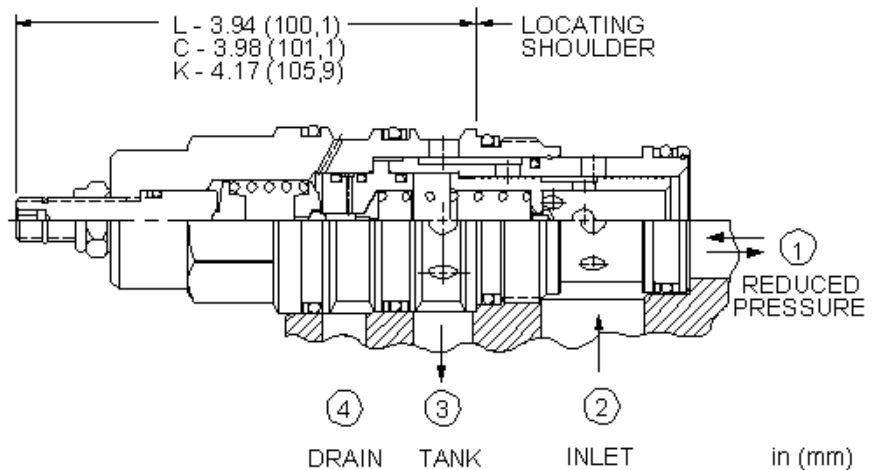
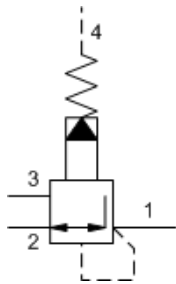
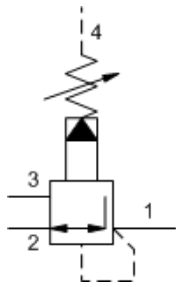
Factory Pressure Settings Established at	blocked control port (dead headed)
Maximum Operating Pressure	350 bar
Control Pilot Flow	0,16 - 0,25 L/min.
Adjustment - No. of CW Turns from Min. to Max. setting	5
Locknut Hex Size	15 mm
Locknut Torque	9 - 10 Nm
Seal kit - Cartridge	Buna: 990022007
Seal kit - Cartridge	Polyurethane: 990022002
Seal kit - Cartridge	Viton: 990022006

NOTES Maximum pressure differentials for spring ranges: A and B are 3000 psi (210 bar) D and E are 2000 psi (140 bar) W is 5000 psi (350 bar) inlet pressure

CONFIGURATION OPTIONS

Model Code Example: PVFALAN

CONTROL	(L) ADJUSTMENT RANGE	(A) SEAL MATERIAL	(N) MATERIAL/COATING
L Standard Screw Adjustment	A 100 - 3000 psi (7 - 210 bar), 200 psi (14 bar) Standard Setting	N Buna-N	Standard Material/Coating
C Tamper Resistant - Factory Set	B 50 - 1500 psi (3,5 - 105 bar), 200 psi (14 bar) Standard Setting	E EPDM	/AP Stainless Steel, Passivated
K Handknob	D 25 - 800 psi (1,7 - 55 bar), 200 psi (14 bar) Standard Setting	V Viton	/LH Mild Steel, Zinc-Nickel
W Hex Wrench Adjustment	E 25 - 400 psi (1,7 - 28 bar), 200 psi (14 bar) Standard Setting		
Y Tri-Grip Handknob	W 150 - 4500 psi (10,5 - 315 bar), 200 psi (14 bar) Standard Setting		



Externally drained, pilot-operated pressure reducing/relieving valves reduce a high primary pressure at the inlet (port 2) to a constant reduced pressure at port 1, with a full-flow relief function from port 1 to tank (port 3). Draining the pilot section at port 4 makes these valves insensitive to pressure at tank (port 3) and provides a means for remote control by pilot or 2-way valves.

TECHNICAL DATA

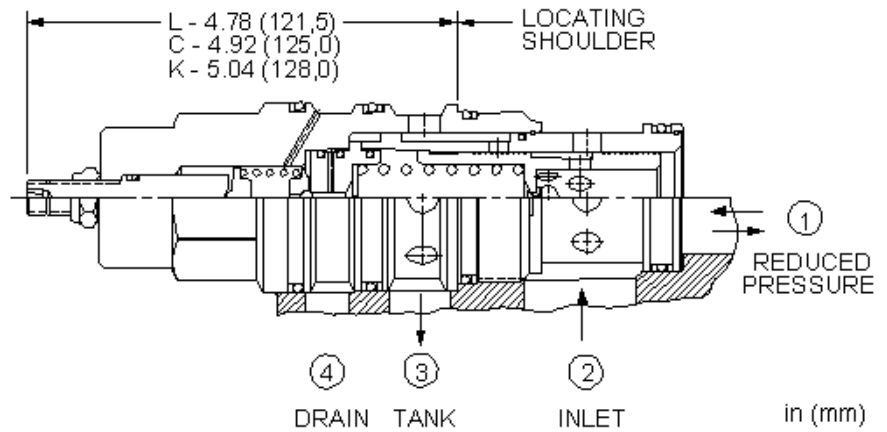
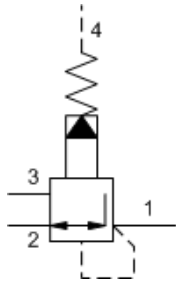
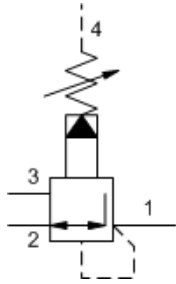
NOTE: DATA MAY VARY BY CONFIGURATION. SEE CONFIGURATION SECTION.

Factory Pressure Settings Established at	blocked control port (dead headed)
Maximum Operating Pressure	350 bar
Control Pilot Flow	0,25 - 0,33 L/min.
Adjustment - No. of CW Turns from Min. to Max. setting	5
Locknut Hex Size	15 mm
Locknut Torque	9 - 10 Nm
Seal kit - Cartridge	Buna: 990023007
Seal kit - Cartridge	EPDM: 990023014
Seal kit - Cartridge	Polyurethane: 990023002
Seal kit - Cartridge	Viton: 990023006

NOTES Maximum pressure differentials for spring ranges: A and B are 3000 psi (210 bar) D and E are 2000 psi (140 bar) W is 5000 psi (350 bar) inlet pressure

CONFIGURATION OPTIONS
Model Code Example: PVHALAN

CONTROL	(L)	ADJUSTMENT RANGE	(A)	SEAL MATERIAL	(N)	MATERIAL/COATING
L Standard Screw Adjustment	A	100 - 3000 psi (7 - 210 bar), 200 psi (14 bar) Standard Setting	N	Buna-N	Standard Material/Coating	
C Tamper Resistant - Factory Set	B	50 - 1500 psi (3,5 - 105 bar), 200 psi (14 bar) Standard Setting	E	EPDM	/AP Stainless Steel, Passivated	
K Handknob	D	25 - 800 psi (1,7 - 55 bar), 200 psi (14 bar) Standard Setting	V	Viton		
	E	25 - 400 psi (1,7 - 28 bar), 200 psi (14 bar) Standard Setting				
	W	150 - 4500 psi (10,5 - 315 bar), 200 psi (14 bar) Standard Setting				



Externally drained, pilot-operated pressure reducing/relieving valves reduce a high primary pressure at the inlet (port 2) to a constant reduced pressure at port 1, with a full-flow relief function from port 1 to tank (port 3). Draining the pilot section at port 4 makes these valves insensitive to pressure at tank (port 3) and provides a means for remote control by pilot or 2-way valves.

TECHNICAL DATA

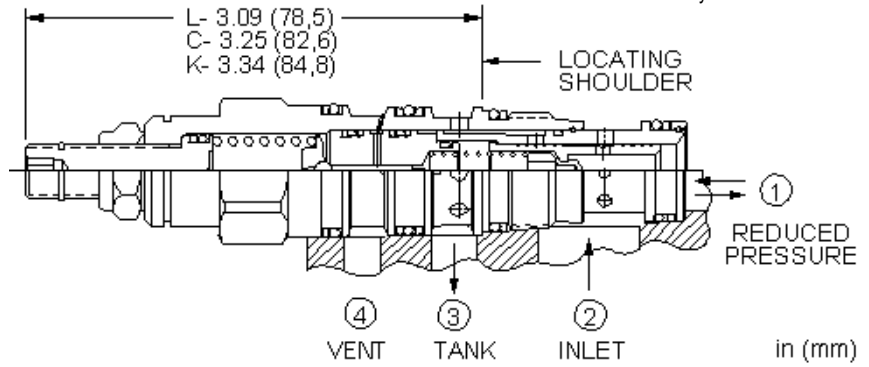
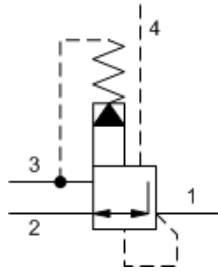
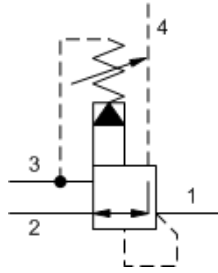
NOTE: DATA MAY VARY BY CONFIGURATION. SEE CONFIGURATION SECTION.

Factory Pressure Settings Established at	blocked control port (dead headed)
Maximum Operating Pressure	350 bar
Control Pilot Flow	0,25 - 0,33 L/min.
Adjustment - No. of CW Turns from Min. to Max. setting	5
Locknut Hex Size	15 mm
Locknut Torque	9 - 10 Nm
Seal kit - Cartridge	Buna: 990024007
Seal kit - Cartridge	EPDM: 990024014
Seal kit - Cartridge	Polyurethane: 990024002
Seal kit - Cartridge	Viton: 990024006

NOTES Maximum pressure differentials for spring ranges: A and B are 3000 psi (210 bar) D and E are 2000 psi (140 bar) W is 5000 psi (350 bar) inlet pressure

CONFIGURATION OPTIONS
Model Code Example: PVJALAN

CONTROL	(L) ADJUSTMENT RANGE	(A) SEAL MATERIAL	(N) MATERIAL/COATING
L Standard Screw Adjustment	A 100 - 3000 psi (7 - 210 bar), 200 psi (14 bar) Standard Setting	N Buna-N	Standard Material/Coating
C Tamper Resistant - Factory Set	B 50 - 1500 psi (3,5 - 105 bar), 200 psi (14 bar) Standard Setting	E EPDM	/AP Stainless Steel, Passivated
K Handknob	D 25 - 800 psi (1,7 - 55 bar), 200 psi (14 bar) Standard Setting	V Viton	
	E 25 - 400 psi (1,7 - 28 bar), 200 psi (14 bar) Standard Setting		
	W 150 - 4500 psi (10,5 - 315 bar), 200 psi (14 bar) Standard Setting		



Ventable, pilot-operated pressure reducing/relieving valves reduce a high primary pressure at the inlet to a constant reduced pressure at port 1, with a full-flow relief function from port 1 to tank (port 3). The vent port (port 4) can be used as a means for remote control by pilot or 2-way valves.

TECHNICAL DATA

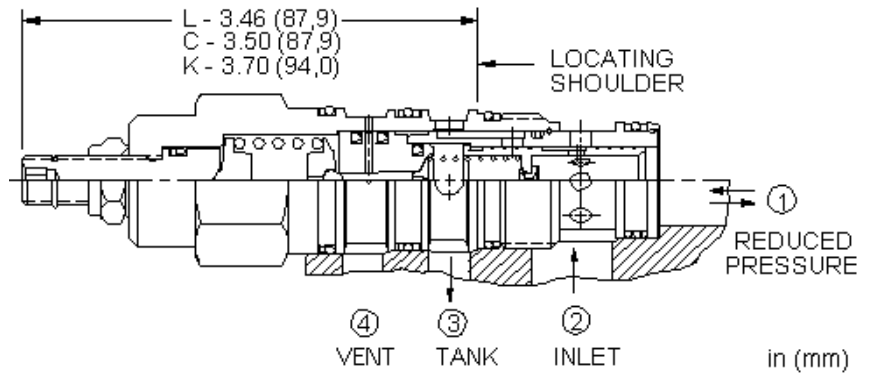
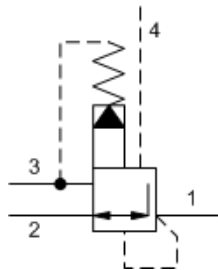
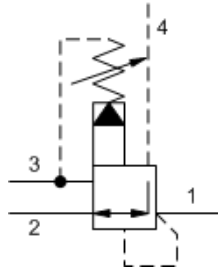
NOTE: DATA MAY VARY BY CONFIGURATION. SEE CONFIGURATION SECTION.

Factory Pressure Settings Established at	blocked control port (dead headed)
Maximum Operating Pressure	350 bar
Control Pilot Flow	0,11 - 0,16 L/min.
Adjustment - No. of CW Turns from Min. to Max. setting	5
Locknut Hex Size	15 mm
Locknut Torque	9 - 10 Nm
Seal kit - Cartridge	Buna: 990021007
Seal kit - Cartridge	EPDM: 990021014
Seal kit - Cartridge	Polyurethane: 990021002
Seal kit - Cartridge	Viton: 990021006

NOTES Maximum pressure differentials for spring ranges: A and B are 3000 psi (210 bar) D and E are 2000 psi (140 bar) W is 5000 psi (350 bar) inlet pressure

CONFIGURATION OPTIONS
Model Code Example: PVDBLAN

CONTROL	(L) ADJUSTMENT RANGE	(A) SEAL MATERIAL	(N) MATERIAL/COATING
L Standard Screw Adjustment	A 100 - 3000 psi (7 - 210 bar), 200 psi (14 bar) Standard Setting	N Buna-N	Standard Material/Coating
C Tamper Resistant - Factory Set	B 50 - 1500 psi (3,5 - 105 bar), 200 psi (14 bar) Standard Setting	V Viton	JAP Stainless Steel, Passivated
K Handknob	C 150 - 6000 psi (10,5 - 420 bar), 200 psi (14 bar) Standard Setting		
	D 25 - 800 psi (1,7 - 55 bar), 200 psi (14 bar) Standard Setting		
	E 25 - 400 psi (1,7 - 28 bar), 200 psi (14 bar) Standard Setting		
	W 150 - 4500 psi (10,5 - 315 bar), 200 psi (14 bar) Standard Setting		



Ventable, pilot-operated pressure reducing/relieving valves reduce a high primary pressure at the inlet to a constant reduced pressure at port 1, with a full-flow relief function from port 1 to tank (port 3). The vent port (port 4) can be used as a means for remote control by pilot or 2-way valves.

TECHNICAL DATA

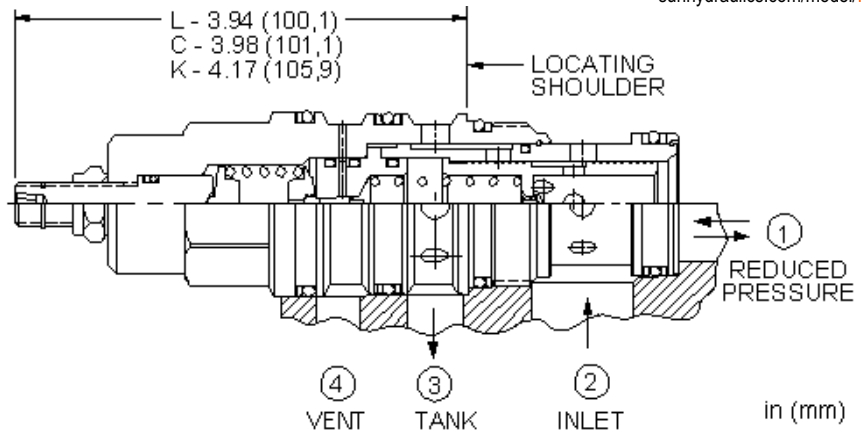
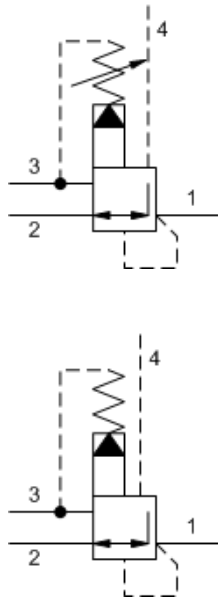
NOTE: DATA MAY VARY BY CONFIGURATION. SEE CONFIGURATION SECTION.

Factory Pressure Settings Established at	blocked control port (dead headed)
Maximum Operating Pressure	350 bar
Control Pilot Flow	0,16 - 0,25 L/min.
Adjustment - No. of CW Turns from Min. to Max. setting	5
Locknut Hex Size	15 mm
Locknut Torque	9 - 10 Nm
Seal kit - Cartridge	Buna: 990022007
Seal kit - Cartridge	Polyurethane: 990022002
Seal kit - Cartridge	Viton: 990022006

NOTES Maximum pressure differentials for spring ranges: A and B are 3000 psi (210 bar) D and E are 2000 psi (140 bar) W is 5000 psi (350 bar) inlet pressure

CONFIGURATION OPTIONS
Model Code Example: PVFBLAN

CONTROL	(L) ADJUSTMENT RANGE	(A) SEAL MATERIAL	(N) MATERIAL/COATING
L Standard Screw Adjustment	A 100 - 3000 psi (7 - 210 bar), 200 psi (14 bar) Standard Setting	N Buna-N	Standard Material/Coating
C Tamper Resistant - Factory Set	B 50 - 1500 psi (3,5 - 105 bar), 200 psi (14 bar) Standard Setting	V Viton	/AP Stainless Steel, Passivated
K Handknob	D 25 - 800 psi (1,7 - 55 bar), 200 psi (14 bar) Standard Setting		
	E 25 - 400 psi (1,7 - 28 bar), 200 psi (14 bar) Standard Setting		
	W 150 - 4500 psi (10,5 - 315 bar), 200 psi (14 bar) Standard Setting		



Ventable, pilot-operated pressure reducing/relieving valves reduce a high primary pressure at the inlet to a constant reduced pressure at port 1, with a full-flow relief function from port 1 to tank (port 3). The vent port (port 4) can be used as a means for remote control by pilot or 2-way valves.

TECHNICAL DATA

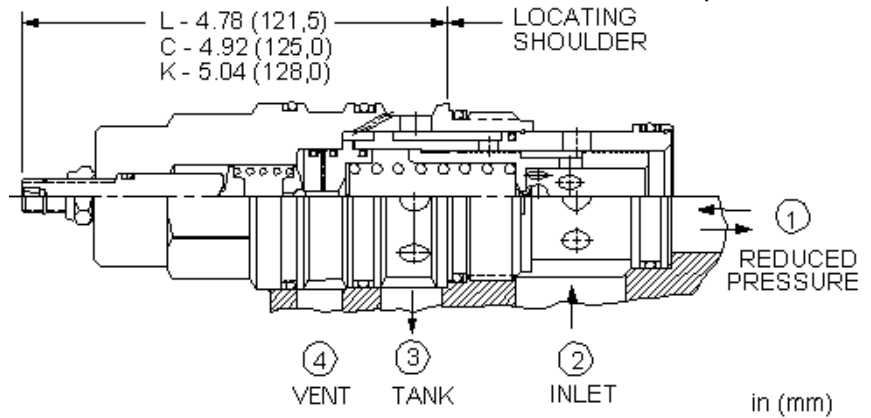
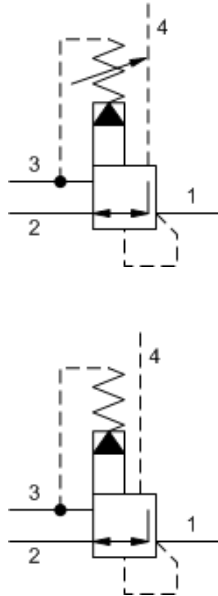
NOTE: DATA MAY VARY BY CONFIGURATION. SEE CONFIGURATION SECTION.

Factory Pressure Settings Established at	blocked control port (dead headed)
Maximum Operating Pressure	350 bar
Control Pilot Flow	0,25 - 0,33 L/min.
Adjustment - No. of CW Turns from Min. to Max. setting	5
Locknut Hex Size	15 mm
Locknut Torque	9 - 10 Nm
Seal kit - Cartridge	Buna: 990023007
Seal kit - Cartridge	EPDM: 990023014
Seal kit - Cartridge	Polyurethane: 990023002
Seal kit - Cartridge	Viton: 990023006

NOTES Maximum pressure differentials for spring ranges: A and B are 3000 psi (210 bar) D and E are 2000 psi (140 bar) W is 5000 psi (350 bar) inlet pressure

CONFIGURATION OPTIONS
Model Code Example: PVHBLAN

CONTROL	(L) ADJUSTMENT RANGE	(A) SEAL MATERIAL	(N) MATERIAL/COATING
L Standard Screw Adjustment	A 100 - 3000 psi (7 - 210 bar), 200 psi (14 bar) Standard Setting	N Buna-N	Standard Material/Coating
C Tamper Resistant - Factory Set	B 50 - 1500 psi (3,5 - 105 bar), 200 psi (14 bar) Standard Setting	E EPDM	/AP Stainless Steel, Passivated
K Handknob	D 25 - 800 psi (1,7 - 55 bar), 200 psi (14 bar) Standard Setting	V Viton	/LH Mild Steel, Zinc-Nickel
	E 25 - 400 psi (1,7 - 28 bar), 200 psi (14 bar) Standard Setting		
	W 150 - 4500 psi (10,5 - 315 bar), 200 psi (14 bar) Standard Setting		



Ventable, pilot-operated pressure reducing/relieving valves reduce a high primary pressure at the inlet to a constant reduced pressure at port 1, with a full-flow relief function from port 1 to tank (port 3). The vent port (port 4) can be used as a means for remote control by pilot or 2-way valves.

TECHNICAL DATA

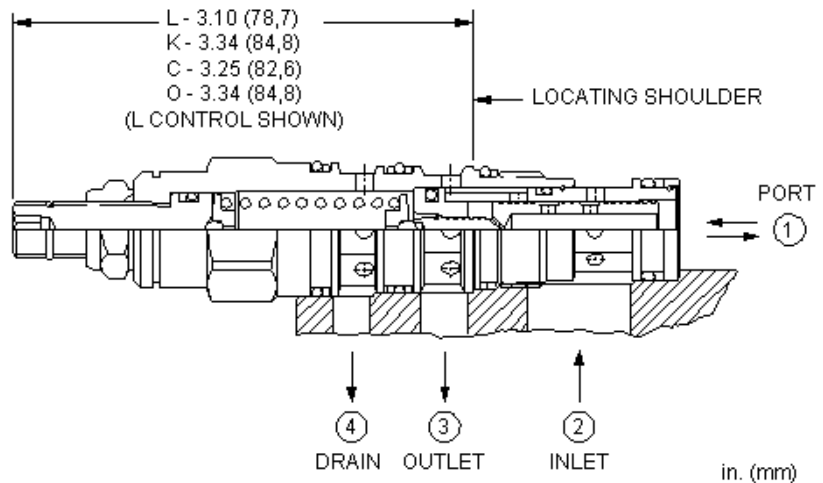
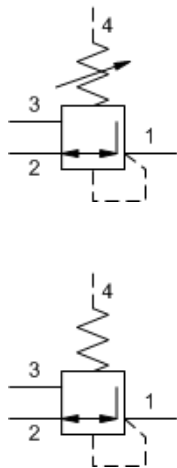
NOTE: DATA MAY VARY BY CONFIGURATION. SEE CONFIGURATION SECTION.

Factory Pressure Settings Established at	blocked control port (dead headed)
Maximum Operating Pressure	350 bar
Control Pilot Flow	0,25 - 0,33 L/min.
Adjustment - No. of CW Turns from Min. to Max. setting	5
Locknut Hex Size	15 mm
Locknut Torque	9 - 10 Nm
Seal kit - Cartridge	Buna: 990024007
Seal kit - Cartridge	Polyurethane: 990024002
Seal kit - Cartridge	Viton: 990024006

NOTES Maximum pressure differentials for spring ranges: A and B are 3000 psi (210 bar) D and E are 2000 psi (140 bar) W is 5000 psi (350 bar) inlet pressure

CONFIGURATION OPTIONS
Model Code Example: PVJBLAN

CONTROL	(L) ADJUSTMENT RANGE	(A) SEAL MATERIAL	(N) MATERIAL/COATING
L Standard Screw Adjustment	A 100 - 3000 psi (7 - 210 bar), 200 psi (14 bar) Standard Setting	N Buna-N	Standard Material/Coating
C Tamper Resistant - Factory Set	B 50 - 1500 psi (3,5 - 105 bar), 200 psi (14 bar) Standard Setting	V Viton	/AP Stainless Steel, Passivated
K Handknob	D 25 - 800 psi (1,7 - 55 bar), 200 psi (14 bar) Standard Setting		/LH Mild Steel, Zinc-Nickel
	E 25 - 400 psi (1,7 - 28 bar), 200 psi (14 bar) Standard Setting		
	W 150 - 4500 psi (10,5 - 315 bar), 200 psi (14 bar) Standard Setting		



Direct-acting, pressure reducing/relieving valves reduce a high primary pressure at the inlet (port 2) to a constant reduced pressure at port 1, with a full-flow relief function from port 1 to tank (port 3). Draining port 4 makes the valve insensitive to pressure at port 3. These valves incorporate a damped construction for stable operation allowing the use of high reduced pressure.

TECHNICAL DATA

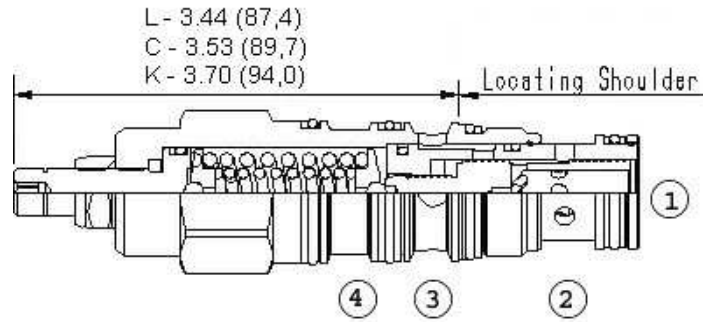
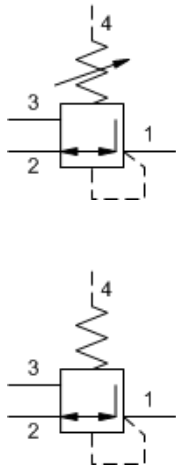
NOTE: DATA MAY VARY BY CONFIGURATION. SEE CONFIGURATION SECTION.

Factory Pressure Settings Established at	0.25 gpm
Maximum Operating Pressure	350 bar
Maximum Valve Leakage at 110 SUS (24 cSt)	30 cc/min.@70 bar
Adjustment - No. of CW Turns from Min. to Max. setting	5
Locknut Hex Size	15 mm
Locknut Torque	9 - 10 Nm
Seal kit - Cartridge	Buna: 990021007
Seal kit - Cartridge	Polyurethane: 990021002
Seal kit - Cartridge	Viton: 990021006

NOTES For Series 1 cartridges configured with an O control (panel mount handknob), a .75 in. (19 mm) diameter hole is required in the panel.

CONFIGURATION OPTIONS
Model Code Example: PSDBLAN

CONTROL	(L) ADJUSTMENT RANGE	(A) SEAL MATERIAL	(N) MATERIAL/COATING
L Standard Screw Adjustment	A 500 - 3000 psi (35 - 210 bar), 700 psi (50 bar) Standard Setting	N Buna-N	Standard Material/Coating
C Tamper Resistant - Factory Set	B 50 - 1500 psi (3,5 - 105 bar), 200 psi (14 bar) Standard Setting	V Viton	/LH Mild Steel, Zinc-Nickel
K Handknob	D 25 - 800 psi (1,7 - 55 bar), 200 psi (14 bar) Standard Setting		
O Handknob with Panel Mount	E 25 - 400 psi (1,7 - 28 bar), 200 psi (14 bar) Standard Setting		
	S 25 - 200 psi (1,7 - 14 bar), 100 psi (7 bar) Standard Setting		
	W 750 - 4500 psi (50 - 315 bar), 1000 psi (70 bar) Standard Setting		



Direct-acting, pressure reducing/relieving valves reduce a high primary pressure at the inlet (port 2) to a constant reduced pressure at port 1, with a full-flow relief function from port 1 to tank (port 3). Draining port 4 makes the valve insensitive to pressure at port 3. These valves incorporate a damped construction for stable operation allowing the use of high reduced pressure.

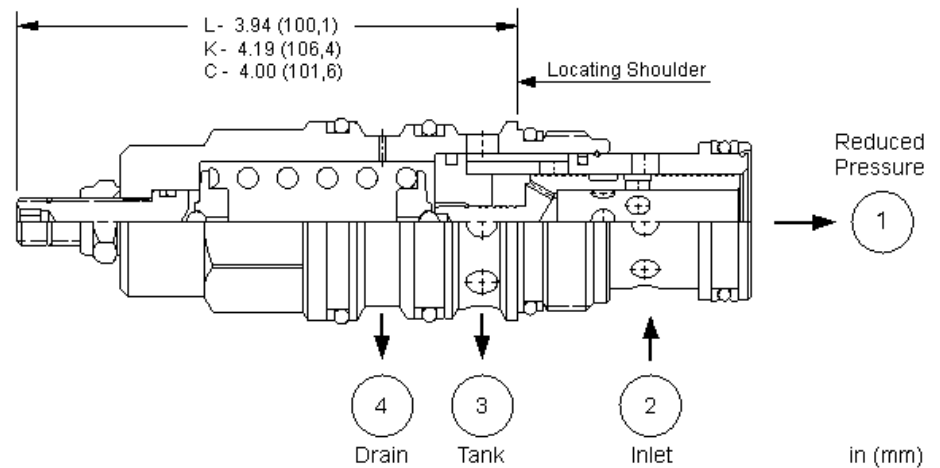
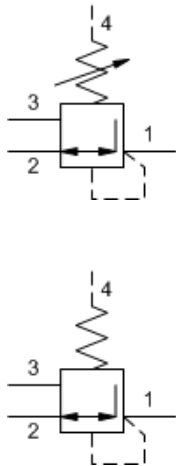
TECHNICAL DATA

NOTE: DATA MAY VARY BY CONFIGURATION. SEE CONFIGURATION SECTION.

Factory Pressure Settings Established at	0.25 gpm
Maximum Operating Pressure	350 bar
Maximum Valve Leakage at 110 SUS (24 cSt)	50 cc/min. @70 bar
Adjustment - No. of CW Turns from Min. to Max. setting	5
Locknut Hex Size	15 mm
Locknut Torque	9 - 10 Nm
Seal kit - Cartridge	Buna: 990022007
Seal kit - Cartridge	Polyurethane: 990022002
Seal kit - Cartridge	Viton: 990022006

CONFIGURATION OPTIONS
Model Code Example: PSFBLAN

CONTROL	(L)	ADJUSTMENT RANGE	(A)	SEAL MATERIAL	(N)
L Standard Screw Adjustment		A 750 - 3000 psi (50 - 210 bar), 1000 psi (70 bar) Standard Setting		N Buna-N	
C Tamper Resistant - Factory Set		B 300 - 1500 psi (20 - 105 bar), 500 psi (35 bar) Standard Setting		V Viton	
K Handknob		D 200 - 800 psi (14 - 55 bar), 400 psi (28 bar) Standard Setting			
		E 100 - 400 psi (7 - 28 bar), 200 psi (14 bar) Standard Setting			
		S 50 - 200 psi (3,5 - 14 bar), 100 psi (7 bar) Standard Setting			



Direct-acting, pressure reducing/relieving valves reduce a high primary pressure at the inlet (port 2) to a constant reduced pressure at port 1, with a full-flow relief function from port 1 to tank (port 3). Draining port 4 makes the valve insensitive to pressure at port 3. These valves incorporate a damped construction for stable operation allowing the use of high reduced pressure.

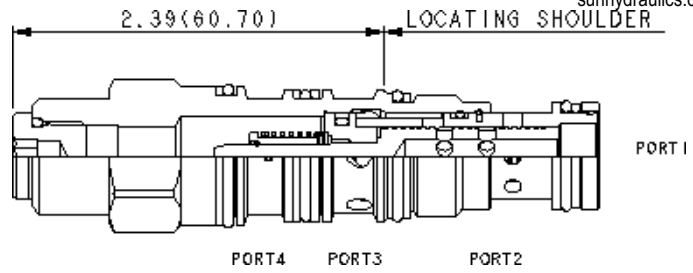
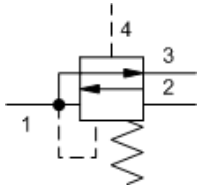
TECHNICAL DATA

NOTE: DATA MAY VARY BY CONFIGURATION. SEE CONFIGURATION SECTION.

Factory Pressure Settings Established at	0.25 gpm
Maximum Operating Pressure	350 bar
Maximum Valve Leakage at 110 SUS (24 cSt)	65 cc/min.@70 bar
Adjustment - No. of CW Turns from Min. to Max. setting	5
Locknut Hex Size	15 mm
Locknut Torque	9 - 10 Nm
Seal kit - Cartridge	Buna: 990023007
Seal kit - Cartridge	EPDM: 990023014
Seal kit - Cartridge	Polyurethane: 990023002
Seal kit - Cartridge	Viton: 990023006

CONFIGURATION OPTIONS
Model Code Example: PSHBLAN

CONTROL	(L) ADJUSTMENT RANGE	(A) SEAL MATERIAL	(N)
L Standard Screw Adjustment	A 750 - 3000 psi (50 - 210 bar), 1000 psi (70 bar) Standard Setting	N Buna-N	
C Tamper Resistant - Factory Set		E EPDM	
K Handknob	B 300 - 1500 psi (20 - 105 bar), 500 psi (35 bar) Standard Setting	V Viton	
	D 200 - 800 psi (14 - 55 bar), 400 psi (28 bar) Standard Setting		
	E 100 - 400 psi (7 - 28 bar), 200 psi (14 bar) Standard Setting		
	S 50 - 200 psi (3,5 - 14 bar), 100 psi (7 bar) Standard Setting		
	W 1100 - 4500 psi (76 - 315 bar), 1100 psi (76 bar) Standard Setting		



The direct-acting reducer/reliever main section is meant to act as an interface between a low flow pressure source at port 4 and a circuit with higher flow requirements. The valve will reduce a high primary pressure at the inlet (port 2) to a reduced pressure at port 1, with a full-flow relief function from port 1 to tank (port 3).

The valve incorporates a damped construction for stable operation allowing the use of high reduced pressure.

TECHNICAL DATA

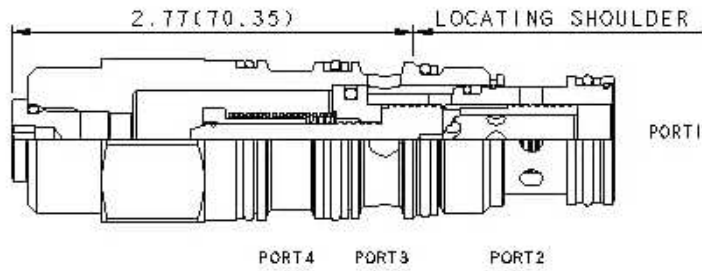
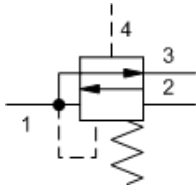
NOTE: DATA MAY VARY BY CONFIGURATION. SEE CONFIGURATION SECTION.

Maximum Operating Pressure	350 bar
Maximum Valve Leakage at 110 SUS (24 cSt)	41 cc/min.
Seal kit - Cartridge	Buna: 990021007
Seal kit - Cartridge	EPDM: 990021014
Seal kit - Cartridge	Polyurethane: 990021002
Seal kit - Cartridge	Viton: 990021006

CONFIGURATION OPTIONS

Model Code Example: PSDTXFN

CONTROL	(X) BIAS PRESSURE	(F) SEAL MATERIAL	(N)
X Not Adjustable	F 100 psi (7 bar)	N Buna-N	
		E EPDM	
		V Viton	



The direct-acting reducer/reliever main section is meant to act as an interface between a low flow pressure source at port 4 and a circuit with higher flow requirements. The valve will reduce a high primary pressure at the inlet (port 2) to a reduced pressure at port 1, with a full-flow relief function from port 1 to tank (port 3).

The valve incorporates a damped construction for stable operation allowing the use of high reduced pressure.

TECHNICAL DATA

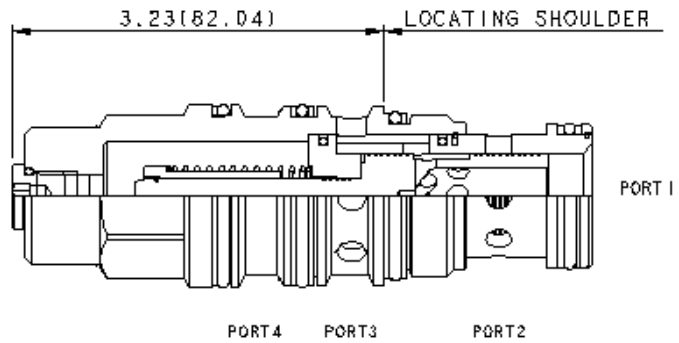
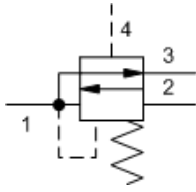
NOTE: DATA MAY VARY BY CONFIGURATION. SEE CONFIGURATION SECTION.

Factory Pressure Settings Established at	blocked control port (dead headed)
Maximum Operating Pressure	350 bar
Maximum Valve Leakage at 110 SUS (24 cSt)	50 cc/min.@70 bar
Seal kit - Cartridge	Buna: 990022007
Seal kit - Cartridge	EPDM: 990022014
Seal kit - Cartridge	Polyurethane: 990022002
Seal kit - Cartridge	Viton: 990022006

CONFIGURATION OPTIONS

Model Code Example: PSFTXFN

CONTROL	(X) BIAS PRESSURE	(F) SEAL MATERIAL	(N)
X Not Adjustable	F 100 psi (7 bar)	N Buna-N	
		E EPDM	
		V Viton	



The direct-acting reducer/reliever main section is meant to act as an interface between a low flow pressure source at port 4 and a circuit with higher flow requirements. The valve will reduce a high primary pressure at the inlet (port 2) to a reduced pressure at port 1, with a full-flow relief function from port 1 to tank (port 3).

The valve incorporates a damped construction for stable operation allowing the use of high reduced pressure.

TECHNICAL DATA

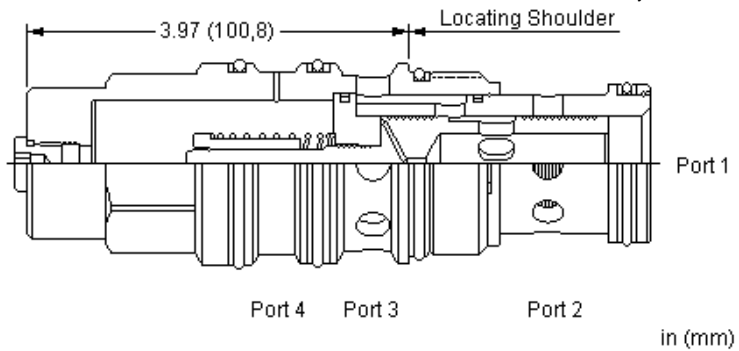
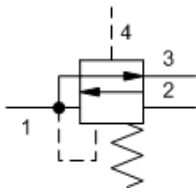
NOTE: DATA MAY VARY BY CONFIGURATION. SEE CONFIGURATION SECTION.

Factory Pressure Settings Established at	blocked control port (dead headed)
Maximum Operating Pressure	350 bar
Maximum Valve Leakage at 110 SUS (24 cSt)	65 cc/min.@70 bar
Seal kit - Cartridge	Buna: 990023007
Seal kit - Cartridge	EPDM: 990023014
Seal kit - Cartridge	Polyurethane: 990023002
Seal kit - Cartridge	Viton: 990023006

CONFIGURATION OPTIONS

Model Code Example: PSHTXFN

CONTROL	(X)	BIAS PRESSURE	(F)	SEAL MATERIAL	(N)
X Not Adjustable		F 100 psi (7 bar)		N Buna-N	
				E EPDM	
				V Viton	



The direct-acting reducer/reliever main section is meant to act as an interface between a low flow pressure source at port 4 and a circuit with higher flow requirements. The valve will reduce a high primary pressure at the inlet (port 2) to a reduced pressure at port 1, with a full-flow relief function from port 1 to tank (port 3).

The valve incorporates a damped construction for stable operation allowing the use of high reduced pressure.

TECHNICAL DATA

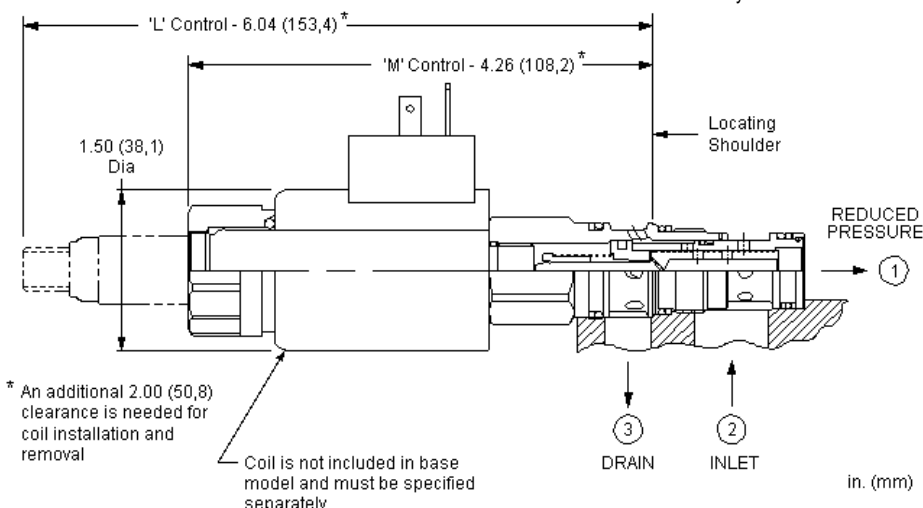
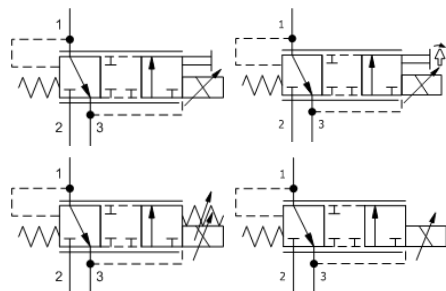
NOTE: DATA MAY VARY BY CONFIGURATION. SEE CONFIGURATION SECTION.

Maximum Operating Pressure	350 bar
Maximum Valve Leakage at 110 SUS (24 cSt)	65 cc/min.@70 bar
Seal kit - Cartridge	Buna: 990024007
Seal kit - Cartridge	EPDM: 990024014
Seal kit - Cartridge	Polyurethane: 990024002
Seal kit - Cartridge	Viton: 990024006

CONFIGURATION OPTIONS

Model Code Example: PSJTxFN

CONTROL	(X) BIAS PRESSURE	(F) SEAL MATERIAL	(N) MATERIAL/COATING
X Not Adjustable	F 100 psi (7 bar)	N Buna-N E EPDM V Viton	Standard Material/Coating /AP Stainless Steel, Passivated



This electro-proportional, direct-acting reducer/reliever valve reduces a high primary pressure at the inlet (port 2) to a constant reduced pressure at port 1, with a full flow relief function from port 1 to tank (port 3). The valve is biased to the relieving mode. Energizing the coil connects port 2 to port 1. Increasing the current to the coil will proportionally increase the reduced pressure at port 1. If pressure at port 1 exceeds the setting induced by the coil, pressure at port 1 is relieved to port 3. This valve is closed in the transition between reducing and relieving resulting in very low consumption of oil. Optional full manual control is available.

TECHNICAL DATA

NOTE: DATA MAY VARY BY CONFIGURATION. SEE CONFIGURATION SECTION.

Maximum Operating Pressure	350 bar
Maximum Valve Leakage at 110 SUS (24 cSt)	41 cc/min.
Adjustment - No. of CW Turns from Min. to Max. setting	5
Locknut Hex Size	15 mm
Locknut Torque	9 - 10 Nm
Seal kit - Cartridge	Buna: 990511007
Seal kit - Cartridge	Viton: 990511006

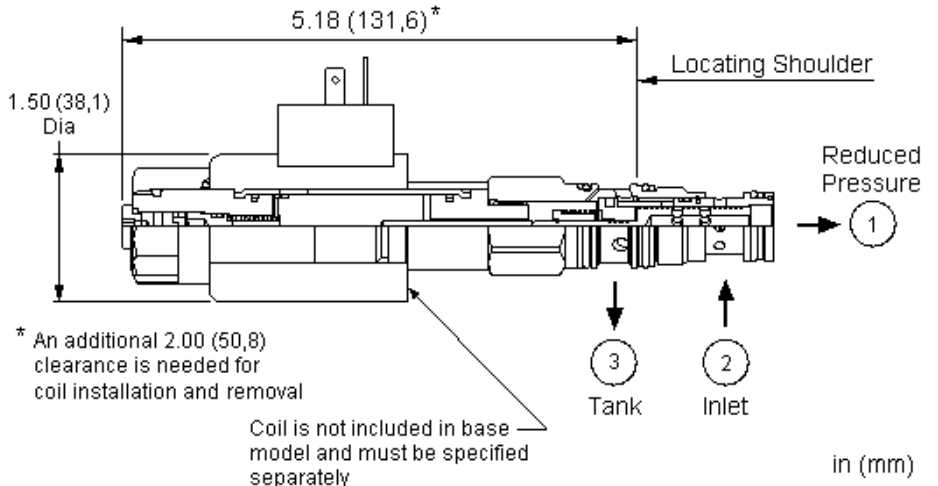
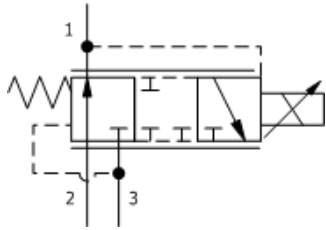
NOTES Please verify cartridge clearance requirements when choosing a Sun manifold. Different valve controls and coils require different clearances.

CONFIGURATION OPTIONS
Model Code Example: PRDPMDN

CONTROL	(M) OPERATING RANGE	(D) SEAL MATERIAL	(N) COIL *
M Manual Override (Standard)	D 50 - 485 psi (3,5 - 33,5 bar)	N Buna-N	No coil
E Twist (Extended) Manual Override	E 25 - 250 psi (1,7 - 18 bar)	E EPDM	212 DIN 43650-Form A, 12 VDC
L Standard Screw Adjustment	B 100 - 1125 psi (7 - 77,5 bar)	V Viton	224 DIN 43650-Form A, 24 VDC
X No Manual Override			224NX01 DIN 43650-Form A, 24 VDC, no transient voltage suppression (TVS) diodes, with XMD-01 driver
			224NX02 DIN 43650-Form A, 24 VDC, no transient voltage suppression (TVS) diodes, with XMD-02 driver
			912 Deutsch DT04-2P, 12 VDC
			912NX01 Deutsch DT04-2P, 12 VDC, no transient voltage suppression (TVS) diodes, with XMD-01 driver
			912NX02 Deutsch DT04-2P, 12 VDC, no transient voltage suppression (TVS) diodes, with XMD-02 driver
			924 Deutsch DT04-2P, 24 VDC
			924NX01 Deutsch DT04-2P, 24 VDC, no transient voltage suppression (TVS) diodes, with XMD-01 driver
			924NX02 Deutsch DT04-2P, 24 VDC, no transient voltage suppression

(TVS) diodes, with XMD-02
driver

* Additional coil options are available



This electro-proportional, direct-acting reducer/reliever valve reduces a high primary pressure at the inlet (port 2) to a constant reduced pressure at port 1, with a full flow relief function from port 1 to tank (port 3). The valve is biased to the reducing mode, connecting port 2 to port 1 at a customer specified pressure setting. Increasing the current to the coil will proportionally decrease the reduced pressure at port 1. If pressure at port 1 exceeds the setting induced by the coil, pressure at port 1 is relieved to port 3. This valve is closed in the transition between reducing and relieving resulting in very low consumption of oil.

TECHNICAL DATA

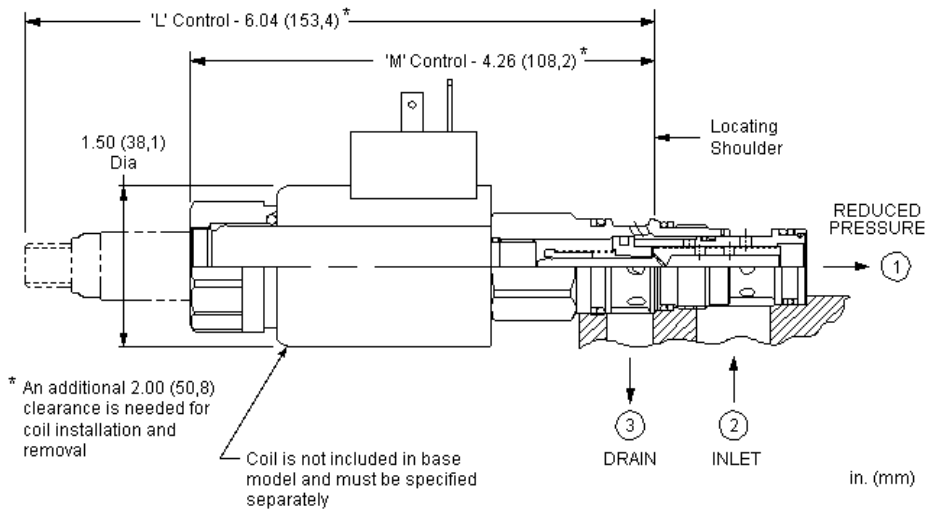
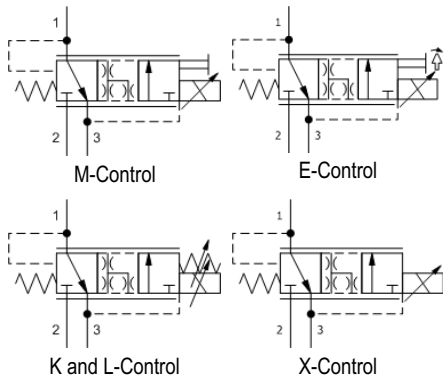
NOTE: DATA MAY VARY BY CONFIGURATION. SEE CONFIGURATION SECTION.

Maximum Operating Pressure	350 bar
Maximum Valve Leakage at 110 SUS (24 cSt)	41 cc/min.
Seal kit - Cartridge	Buna: 990511007
Seal kit - Cartridge	Viton: 990511006

CONFIGURATION OPTIONS
Model Code Example: PRDNXDN

CONTROL	(X) ADJUSTMENT RANGE	(D) SEAL MATERIAL	(N) COIL *
X No Manual Override	D 400 - 200 psi (14 - 28 bar) B 1000 - 400 psi (28 - 70 bar) E 200 - 100 psi (7 - 14 bar)	N Buna-N V Viton	No coil 212 DIN 43650-Form A, 12 VDC 224 DIN 43650-Form A, 24 VDC 912 Deutsch DT04-2P, 12 VDC 924 Deutsch DT04-2P, 24 VDC

* Additional coil options are available



This electro-proportional, direct-acting reducer/reliever valve reduces a high primary pressure at the inlet (port 2) to a constant reduced pressure at port 1, with a full flow relief function from port 1 to tank (port 3). The valve is biased to the relieving mode. Energizing the coil connects port 2 to port 1. Increasing the current to the coil will proportionally increase the reduced pressure at port 1. If pressure at port 1 exceeds the setting induced by the coil, pressure at port 1 is relieved to port 3. This valve is open in the transition from reducing to relieving. It provides good pressure control and dynamic response. Optional full manual control is available.

TECHNICAL DATA

NOTE: DATA MAY VARY BY CONFIGURATION. SEE CONFIGURATION SECTION.

Maximum Operating Pressure	350 bar
Maximum Valve Leakage at 110 SUS (24 cSt)	330 cc/min.
Adjustment - No. of CW Turns from Min. to Max. setting	5
Locknut Hex Size	15 mm
Locknut Torque	9 - 10 Nm
Seal kit - Cartridge	Buna: 990511007
Seal kit - Cartridge	Viton: 990511006

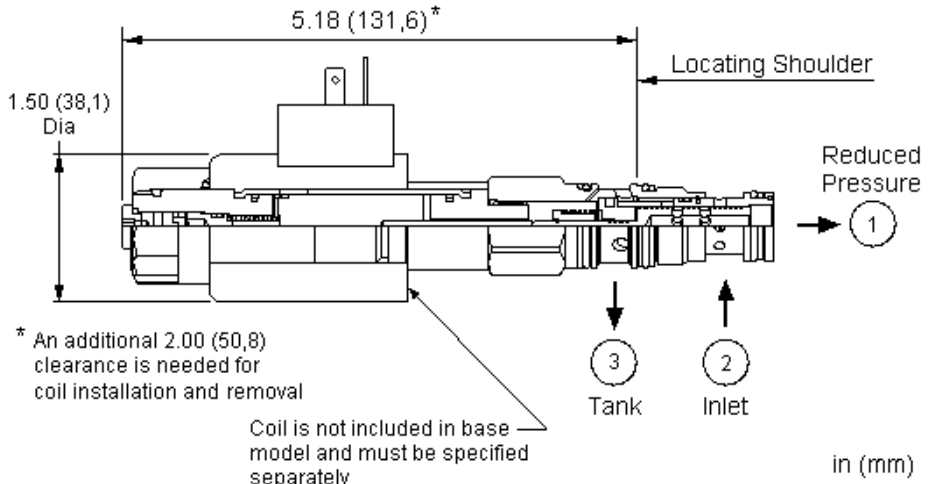
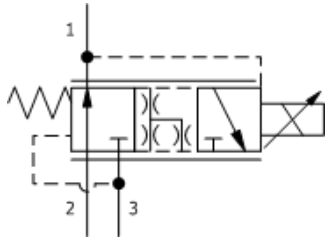
NOTES Please verify cartridge clearance requirements when choosing a Sun manifold. Different valve controls and coils require different clearances.

CONFIGURATION OPTIONS
Model Code Example: PRDLMDN

CONTROL	(M) OPERATING RANGE	(D) SEAL MATERIAL	(N) COIL *
M Manual Override (Standard)	D 50 - 485 psi (3,5 - 33,5 bar)	N Buna-N	No coil
E Twist (Extended) Manual Override	E 25 - 250 psi (1,7 - 18 bar)	E EPDM	212 DIN 43650-Form A, 12 VDC
L Standard Screw Adjustment	B 100 - 1125 psi (7 - 77,5 bar)	V Viton	224 DIN 43650-Form A, 24 VDC
X No Manual Override	S 10 - 100 psi (0,7 - 7 bar)		224NX01 DIN 43650-Form A, 24 VDC, no transient voltage suppression (TVS) diodes, with XMD-01 driver
			224NX02 DIN 43650-Form A, 24 VDC, no transient voltage suppression (TVS) diodes, with XMD-02 driver
			912 Deutsch DT04-2P, 12 VDC
			912NX01 Deutsch DT04-2P, 12 VDC, no transient voltage suppression (TVS) diodes, with XMD-01 driver
			912NX02 Deutsch DT04-2P, 12 VDC, no transient voltage suppression (TVS) diodes, with XMD-02 driver
			924 Deutsch DT04-2P, 24 VDC
			924NX01 Deutsch DT04-2P, 24 VDC, no transient voltage suppression (TVS) diodes, with XMD-01 driver
			924NX02 Deutsch DT04-2P, 24 VDC, no transient voltage suppression

(TVS) diodes, with XMD-02
driver

* Additional coil options are available



This electro-proportional, direct-acting reducer/reliever valve reduces a high primary pressure at the inlet (port 2) to a constant reduced pressure at port 1, with a full flow relief function from port 1 to tank (port 3). The valve is biased to the reducing mode, connecting port 2 to port 1 at a customer specified pressure setting. Increasing the current to the coil will proportionally decrease the reduced pressure at port 1. If pressure at port 1 exceeds the setting induced by the coil, pressure at port 1 is relieved to port 3. This valve is open in the transition from reducing to relieving. It provides good pressure control and dynamic response.

TECHNICAL DATA

NOTE: DATA MAY VARY BY CONFIGURATION. SEE CONFIGURATION SECTION.

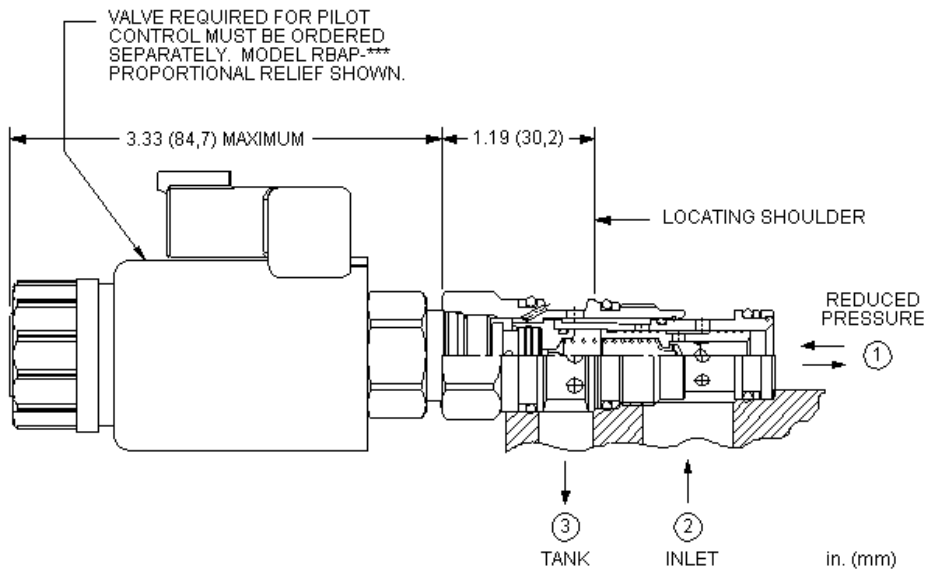
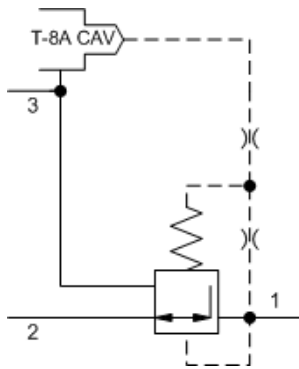
Maximum Operating Pressure	350 bar
Maximum Valve Leakage at 110 SUS (24 cSt)	330 cc/min.
Seal kit - Cartridge	Buna: 990511007
Seal kit - Cartridge	Viton: 990511006

CONFIGURATION OPTIONS

Model Code Example: PRDMXDN

CONTROL	(X) ADJUSTMENT RANGE	(D) SEAL MATERIAL	(N) COIL *
X No Manual Override	D 400 - 200 psi (14 - 28 bar)	N Buna-N	No coil
	B 1000 - 400 psi (28 - 70 bar)	V Viton	212 DIN 43650-Form A, 12 VDC
	E 200 - 100 psi (7 - 14 bar)		224 DIN 43650-Form A, 24 VDC
	S 100 - 10 psi (0,7 - 7 bar)		912 Deutsch DT04-2P, 12 VDC
			924 Deutsch DT04-2P, 24 VDC

* Additional coil options are available



This valve is a 3-way, normally open modulating element that incorporates an integral pilot control cavity. The pilot control cavity will accept any T-8A pressure control cartridge. The valve reduces a high primary pressure at the inlet (port 2) to a constant reduced pressure at port 1, with a full flow relief function from port 1 to tank (port 3). The pilot cartridge's setting determines the difference in pressure between reduced pressure (port 1) and the tank (port 3).

TECHNICAL DATA

NOTE: DATA MAY VARY BY CONFIGURATION. SEE CONFIGURATION SECTION.

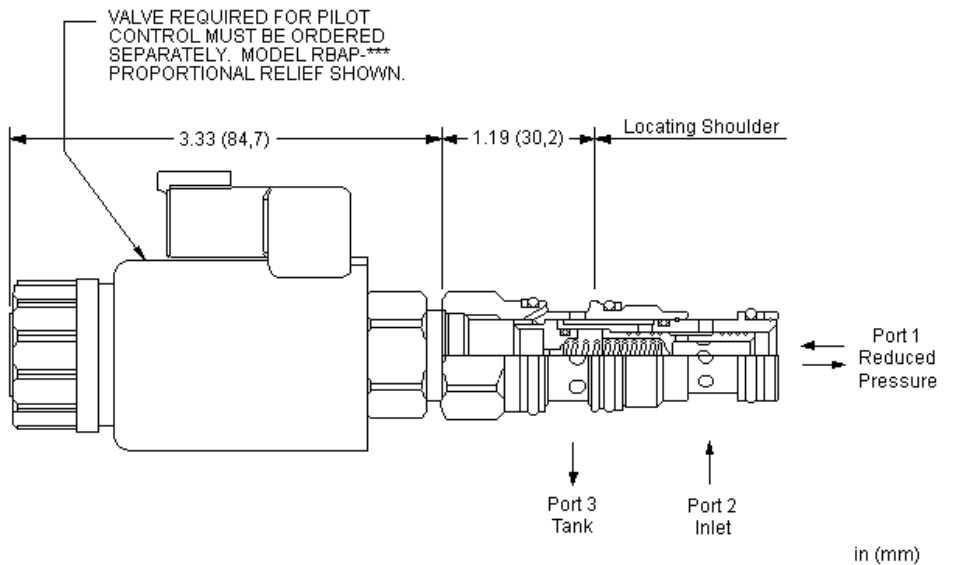
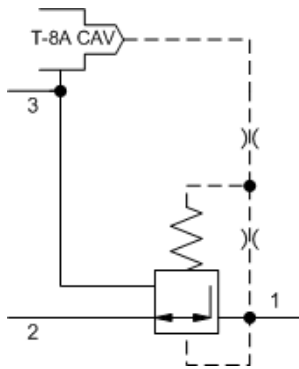
Maximum Operating Pressure	350 bar
Control Pilot Flow	0,11 - 0,16 L/min.
Pilot Control Cavity	T-8A
Pilot Control Valve Installation Torque	27 - 33 Nm
Pilot Control Valve Hex Size	22,2 mm
Seal kit - Cartridge	Buna: 990011007
Seal kit - Cartridge	EPDM: 990011014
Seal kit - Cartridge	Polyurethane: 990011002
Seal kit - Cartridge	Viton: 990011006

NOTES Compound cartridge (pilot and main stage) assembly information is provided for reference only. Cartridges must be ordered separately and assembled at point of use.

CONFIGURATION OPTIONS

Model Code Example: PPDB8WN

MINIMUM CONTROL PRESSURE (W)	SEAL MATERIAL (N)
W 100 psi (7 bar)	N Buna-N
D 25 psi (1,7 bar)	V Viton



This valve is a 3-way, normally open modulating element that incorporates an integral pilot control cavity. The pilot control cavity will accept any T-8A pressure control cartridge. The valve reduces a high primary pressure at the inlet (port 2) to a constant reduced pressure at port 1, with a full flow relief function from port 1 to tank (port 3). The pilot cartridge's setting determines the difference in pressure between reduced pressure (port 1) and the tank (port 3).

TECHNICAL DATA

NOTE: DATA MAY VARY BY CONFIGURATION. SEE CONFIGURATION SECTION.

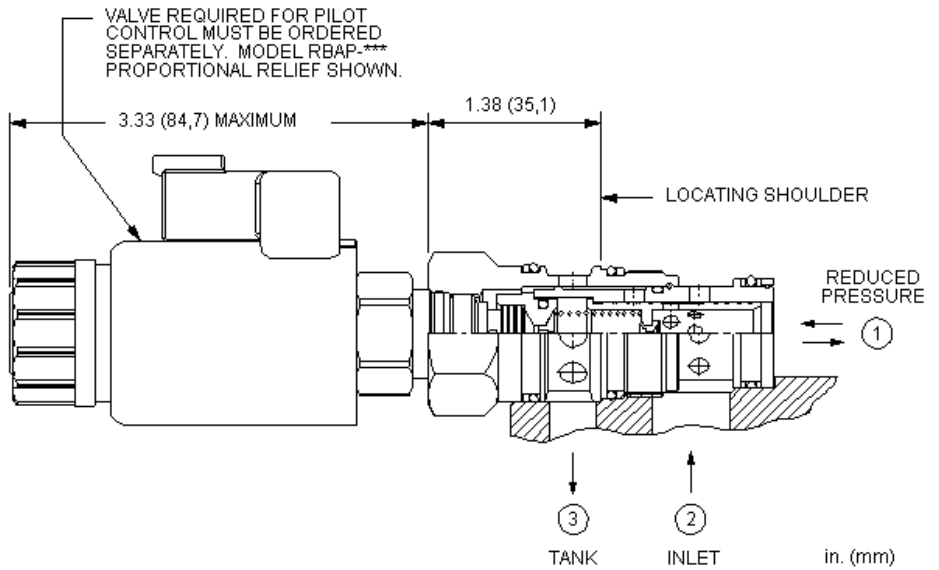
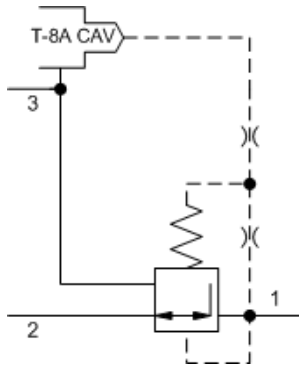
Maximum Operating Pressure	350 bar
Control Pilot Flow	0,11 - 0,16 L/min.
Pilot Control Cavity	T-8A
Pilot Control Valve Installation Torque	27 - 33 Nm
Pilot Control Valve Hex Size	22,2 mm
Seal kit - Cartridge	Buna: 990011007
Seal kit - Cartridge	Polyurethane: 990011002
Seal kit - Cartridge	Viton: 990011006

NOTES Compound cartridge (pilot and main stage) assembly information is provided for reference only. Cartridges must be ordered separately and assembled at point of use.

CONFIGURATION OPTIONS

Model Code Example: PPDF8WN

MINIMUM CONTROL PRESSURE (W)	SEAL MATERIAL (N)
W 100 psi (7 bar)	N Buna-N
D 25 psi (1,7 bar)	V Viton



This valve is a 3-way, normally open modulating element that incorporates an integral pilot control cavity. The pilot control cavity will accept any T-8A pressure control cartridge. The valve reduces a high primary pressure at the inlet (port 2) to a constant reduced pressure at port 1, with a full flow relief function from port 1 to tank (port 3). The pilot cartridge's setting determines the difference in pressure between reduced pressure (port 1) and the tank (port 3).

TECHNICAL DATA

NOTE: DATA MAY VARY BY CONFIGURATION. SEE CONFIGURATION SECTION.

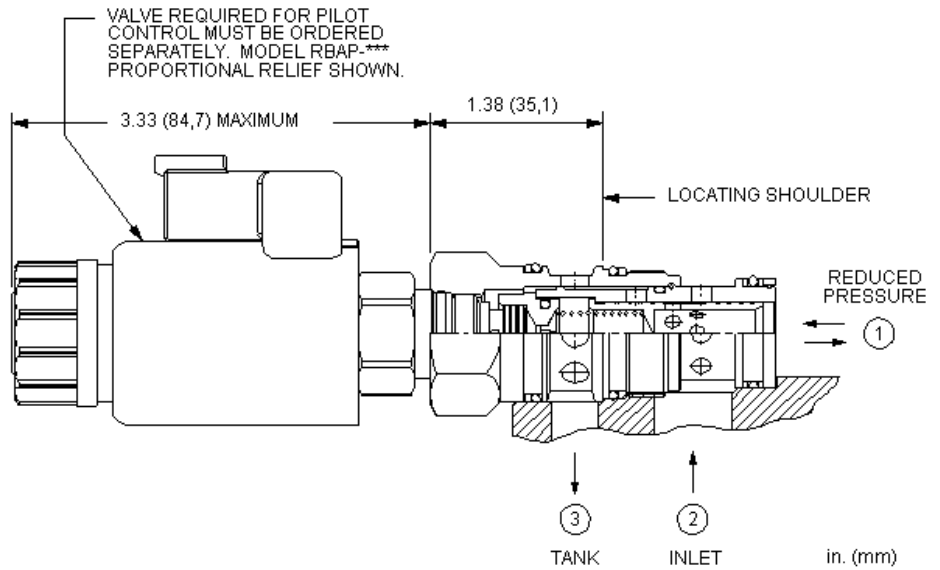
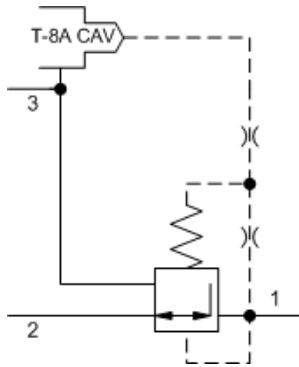
Maximum Operating Pressure	350 bar
Control Pilot Flow	0,16 - 0,25 L/min.
Pilot Control Cavity	T-8A
Pilot Control Valve Installation Torque	27 - 33 Nm
Pilot Control Valve Hex Size	22,2 mm
Seal kit - Cartridge	Buna: 990202007
Seal kit - Cartridge	EPDM: 990202014
Seal kit - Cartridge	Polyurethane: 990002002
Seal kit - Cartridge	Viton: 990202006

NOTES Compound cartridge (pilot and main stage) assembly information is provided for reference only. Cartridges must be ordered separately and assembled at point of use.

CONFIGURATION OPTIONS

Model Code Example: PPFB8WN

MINIMUM CONTROL PRESSURE (W)	SEAL MATERIAL	(N) MATERIAL/COATING
W 100 psi (7 bar)	N Buna-N	Standard Material/Coating
D 25 psi (1,7 bar)	E EPDM	/AP Stainless Steel, Passivated
	V Viton	



This valve is a 3-way, normally open modulating element that incorporates an integral pilot control cavity. The pilot control cavity will accept any T-8A pressure control cartridge. The valve reduces a high primary pressure at the inlet (port 2) to a constant reduced pressure at port 1, with a full flow relief function from port 1 to tank (port 3). The pilot cartridge's setting determines the difference in pressure between reduced pressure (port 1) and the tank (port 3).

TECHNICAL DATA

NOTE: DATA MAY VARY BY CONFIGURATION. SEE CONFIGURATION SECTION.

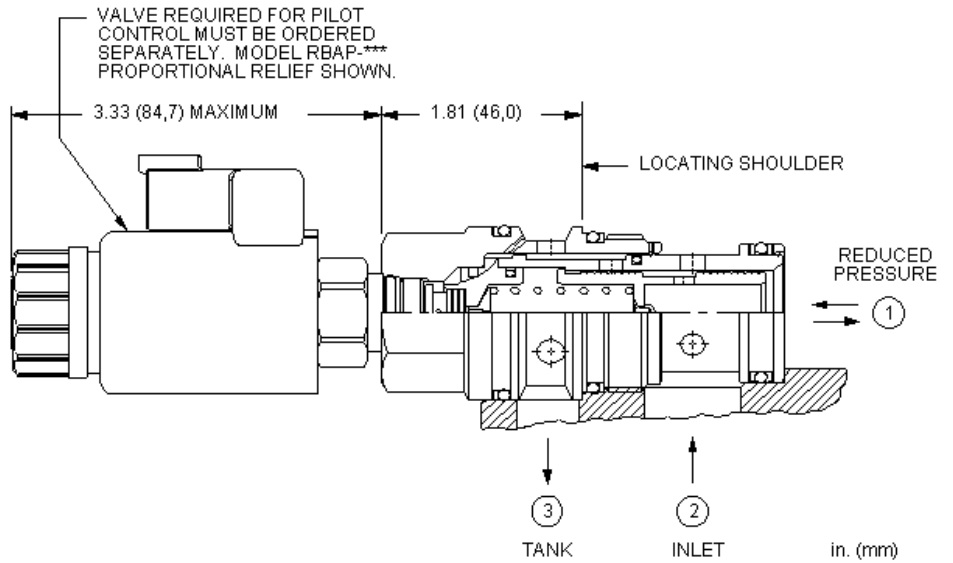
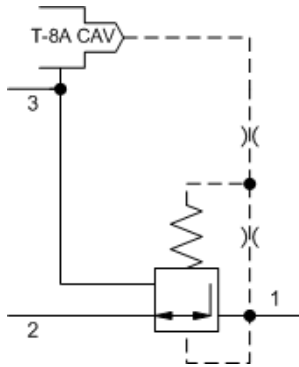
Maximum Operating Pressure	350 bar
Control Pilot Flow	0,16 - 0,25 L/min.
Pilot Control Cavity	T-8A
Pilot Control Valve Installation Torque	27 - 33 Nm
Pilot Control Valve Hex Size	22,2 mm
Seal kit - Cartridge	Buna: 990202007
Seal kit - Cartridge	Polyurethane: 990002002
Seal kit - Cartridge	Viton: 990202006

CONFIGURATION OPTIONS

Model Code Example: PPFF8WN

MINIMUM CONTROL PRESSURE (W) SEAL MATERIAL (N)

W 100 psi (7 bar)	N Buna-N
D 25 psi (1,7 bar)	V Viton



This valve is a 3-way, normally open modulating element that incorporates an integral pilot control cavity. The pilot control cavity will accept any T-8A pressure control cartridge. The valve reduces a high primary pressure at the inlet (port 2) to a constant reduced pressure at port 1, with a full flow relief function from port 1 to tank (port 3). The pilot cartridge's setting determines the difference in pressure between reduced pressure (port 1) and the tank (port 3).

TECHNICAL DATA

NOTE: DATA MAY VARY BY CONFIGURATION. SEE CONFIGURATION SECTION.

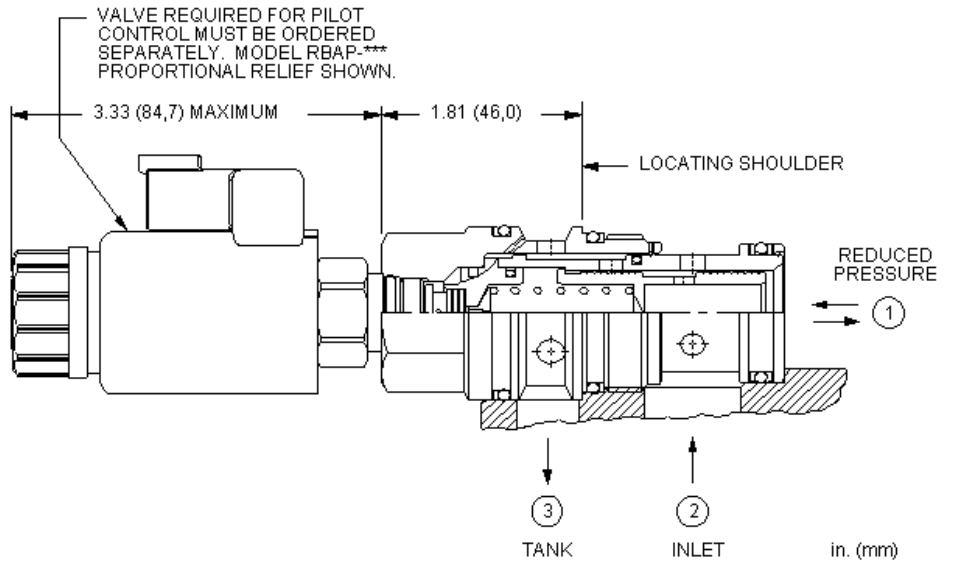
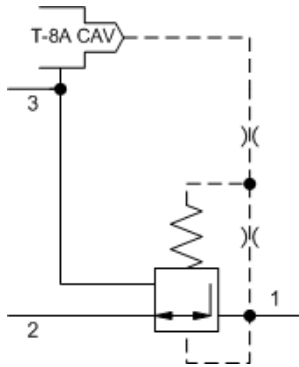
Maximum Operating Pressure	350 bar
Control Pilot Flow	0,25 - 0,33 L/min.
Pilot Control Cavity	T-8A
Seal kit - Cartridge	Buna: 990017007
Seal kit - Cartridge	Polyurethane: 990017002
Seal kit - Cartridge	Viton: 990017006

NOTES Compound cartridge (pilot and main stage) assembly information is provided for reference only. Cartridges must be ordered separately and assembled at point of use.

CONFIGURATION OPTIONS

Model Code Example: PPHB8WN

MINIMUM CONTROL PRESSURE (W)	SEAL MATERIAL (N)
W 100 psi (7 bar)	N Buna-N
D 25 psi (1,7 bar)	E EPDM
	V Viton



This valve is a 3-way, normally open modulating element that incorporates an integral pilot control cavity. The pilot control cavity will accept any T-8A pressure control cartridge. The valve reduces a high primary pressure at the inlet (port 2) to a constant reduced pressure at port 1, with a full flow relief function from port 1 to tank (port 3). The pilot cartridge's setting determines the difference in pressure between reduced pressure (port 1) and the tank (port 3).

TECHNICAL DATA

NOTE: DATA MAY VARY BY CONFIGURATION. SEE CONFIGURATION SECTION.

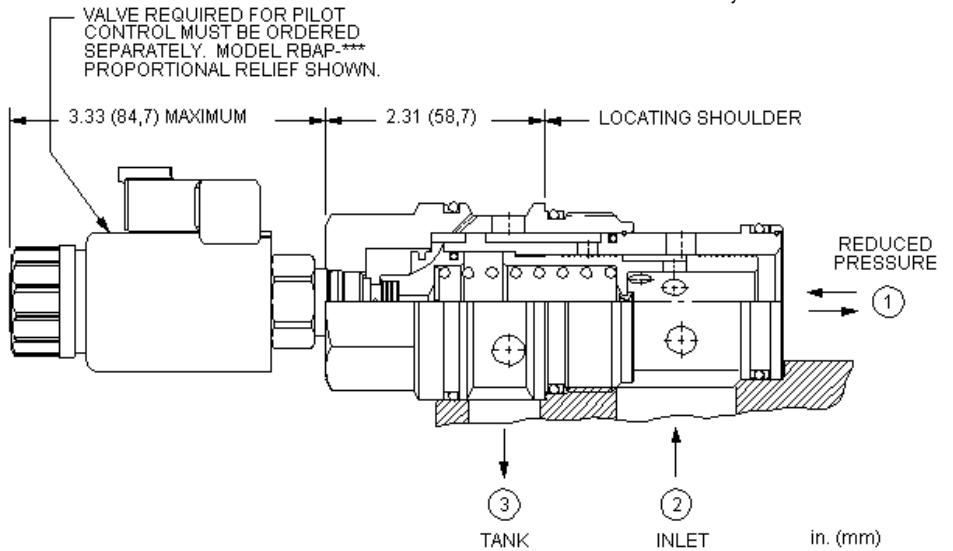
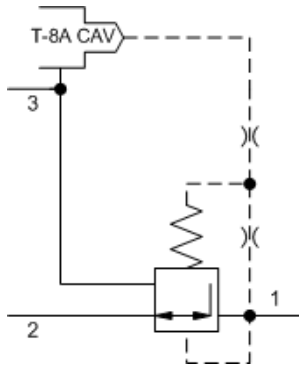
Maximum Operating Pressure	350 bar
Control Pilot Flow	0,25 - 0,33 L/min.
Pilot Control Cavity	T-8A
Pilot Control Valve Installation Torque	27 - 33 Nm
Pilot Control Valve Hex Size	22,2 mm
Seal kit - Cartridge	Buna: 990017007
Seal kit - Cartridge	Polyurethane: 990017002
Seal kit - Cartridge	Viton: 990017006

NOTES Compound cartridge (pilot and main stage) assembly information is provided for reference only. Cartridges must be ordered separately and assembled at point of use.

CONFIGURATION OPTIONS

Model Code Example: PPHF8WN

MINIMUM CONTROL PRESSURE (W)	SEAL MATERIAL (N)
W 100 psi (7 bar)	N Buna-N
D 25 psi (1,7 bar)	V Viton



This valve is a 3-way, normally open modulating element that incorporates an integral pilot control cavity. The pilot control cavity will accept any T-8A pressure control cartridge. The valve reduces a high primary pressure at the inlet (port 2) to a constant reduced pressure at port 1, with a full flow relief function from port 1 to tank (port 3). The pilot cartridge's setting determines the difference in pressure between reduced pressure (port 1) and the tank (port 3).

TECHNICAL DATA

NOTE: DATA MAY VARY BY CONFIGURATION. SEE CONFIGURATION SECTION.

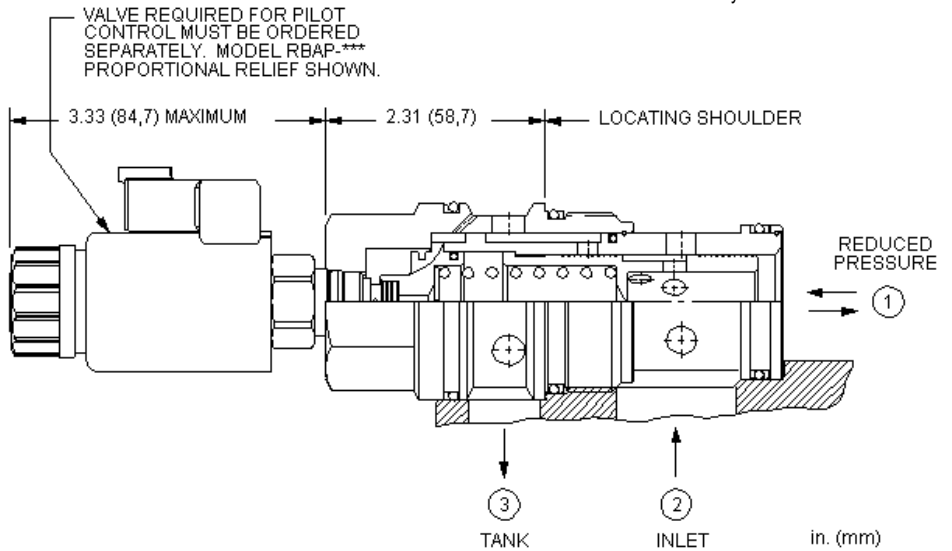
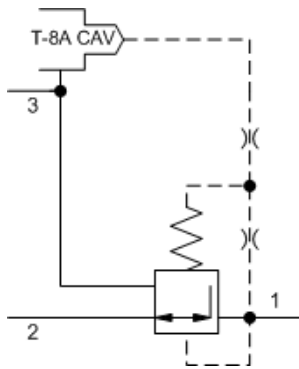
Maximum Operating Pressure	350 bar
Control Pilot Flow	0,25 - 0,33 L/min.
Pilot Control Cavity	T-8A
Seal kit - Cartridge	Buna: 990019007
Seal kit - Cartridge	Polyurethane: 990019002
Seal kit - Cartridge	Viton: 990019006

NOTES Compound cartridge (pilot and main stage) assembly information is provided for reference only. Cartridges must be ordered separately and assembled at point of use.

CONFIGURATION OPTIONS

Model Code Example: PPJB8WN

MINIMUM CONTROL PRESSURE (W)	SEAL MATERIAL (N)
W 100 psi (7 bar)	N Buna-N
D 25 psi (1,7 bar)	V Viton



This valve is a 3-way, normally open modulating element that incorporates an integral pilot control cavity. The pilot control cavity will accept any T-8A pressure control cartridge. The valve reduces a high primary pressure at the inlet (port 2) to a constant reduced pressure at port 1, with a full flow relief function from port 1 to tank (port 3). The pilot cartridge's setting determines the difference in pressure between reduced pressure (port 1) and the tank (port 3).

TECHNICAL DATA

NOTE: DATA MAY VARY BY CONFIGURATION. SEE CONFIGURATION SECTION.

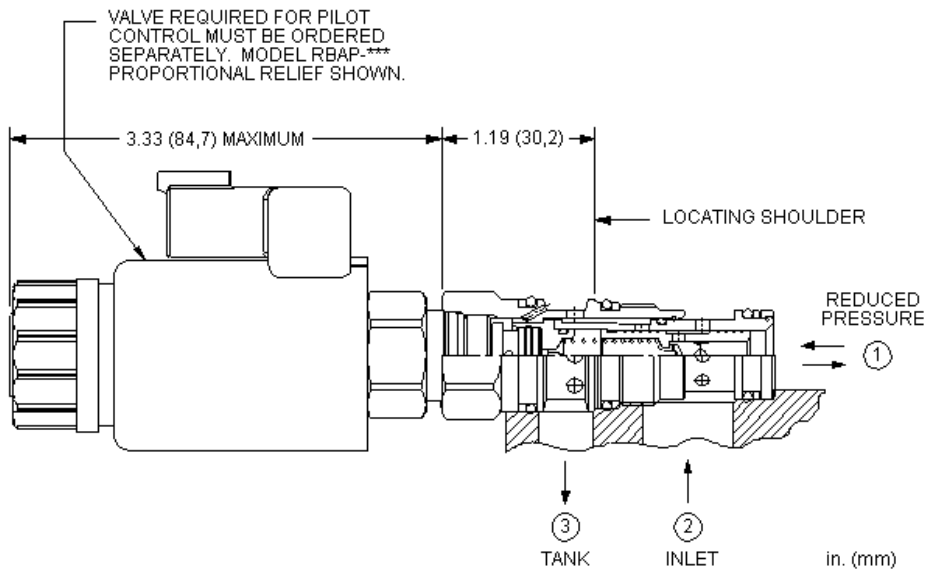
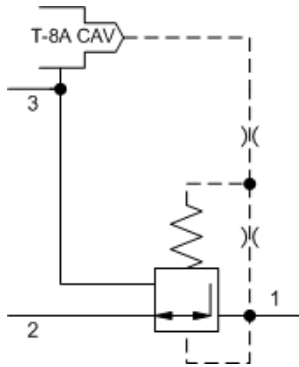
Factory Pressure Settings Established at	blocked control port (dead headed)
Maximum Operating Pressure	350 bar
Control Pilot Flow	0,25 - 0,33 L/min.
Pilot Control Cavity	T-8A
Seal kit - Cartridge	Buna: 990019007
Seal kit - Cartridge	Polyurethane: 990019002
Seal kit - Cartridge	Viton: 990019006

NOTES Compound cartridge (pilot and main stage) assembly information is provided for reference only. Cartridges must be ordered separately and assembled at point of use.

CONFIGURATION OPTIONS

Model Code Example: PPJF8WN

MINIMUM CONTROL PRESSURE (W)	SEAL MATERIAL (N)
W 100 psi (7 bar)	N Buna-N
D 25 psi (1,7 bar)	V Viton



This valve is a 3-way, normally open modulating element that incorporates an integral pilot control cavity. The pilot control cavity will accept any T-8A pressure control cartridge. The valve reduces a high primary pressure at the inlet (port 2) to a constant reduced pressure at port 1, with a full flow relief function from port 1 to tank (port 3). The pilot cartridge's setting determines the difference in pressure between reduced pressure (port 1) and the tank (port 3).

This valve is open in the transition from reducing to relieving which provides good pressure control and dynamic response at the expense of higher pilot flow in the deadheaded condition.

TECHNICAL DATA

NOTE: DATA MAY VARY BY CONFIGURATION. SEE CONFIGURATION SECTION.

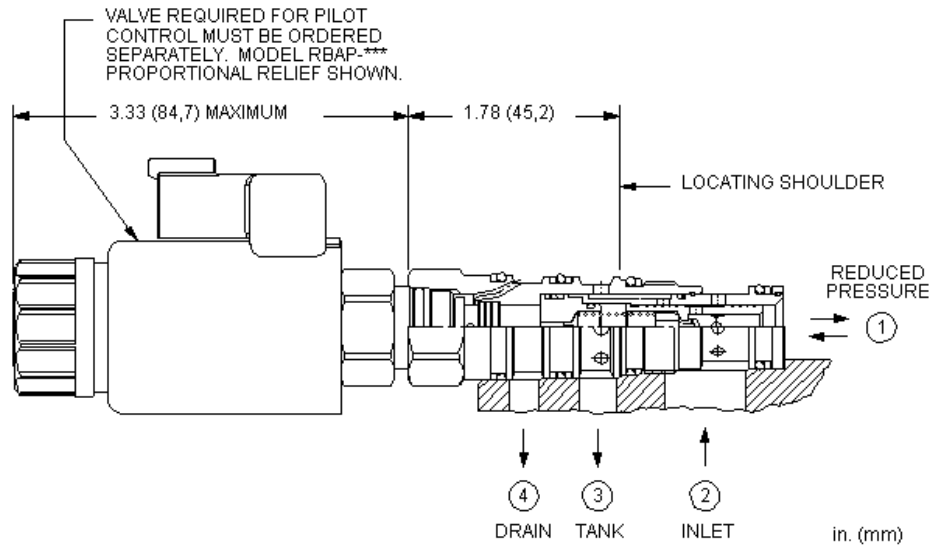
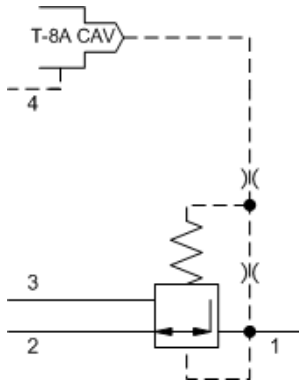
Maximum Operating Pressure	350 bar
Control Pilot Flow	0,40 - 0,50 L/min.
Pilot Control Cavity	T-8A
Pilot Control Valve Installation Torque	27 - 33 Nm
Pilot Control Valve Hex Size	22,2 mm
Seal kit - Cartridge	Buna: 990011007
Seal kit - Cartridge	EPDM: 990011014
Seal kit - Cartridge	Polyurethane: 990011002
Seal kit - Cartridge	Viton: 990011006

NOTES Compound cartridge (pilot and main stage) assembly information is provided for reference only. Cartridges must be ordered separately and assembled at point of use.

CONFIGURATION OPTIONS

Model Code Example: PPDL8WN

MINIMUM CONTROL PRESSURE (W)	SEAL MATERIAL (N)
W 150 psi (10,5 bar)	N Buna-N
D 100 psi (7 bar)	E EPDM
	V Viton



This valve is a 3-way, normally open modulating element, externally drained, that incorporates an integral pilot control cavity. The pilot control cavity will accept any T-8A pressure control cartridge. The valve reduces a high primary pressure at the inlet (port 2) to a constant reduced pressure at port 1, with a full flow relief function from port 1 to tank (port 3). The pilot cartridge's setting determines the difference in pressure between reduced pressure (port 1) and the drain (port 4).

TECHNICAL DATA

NOTE: DATA MAY VARY BY CONFIGURATION. SEE CONFIGURATION SECTION.

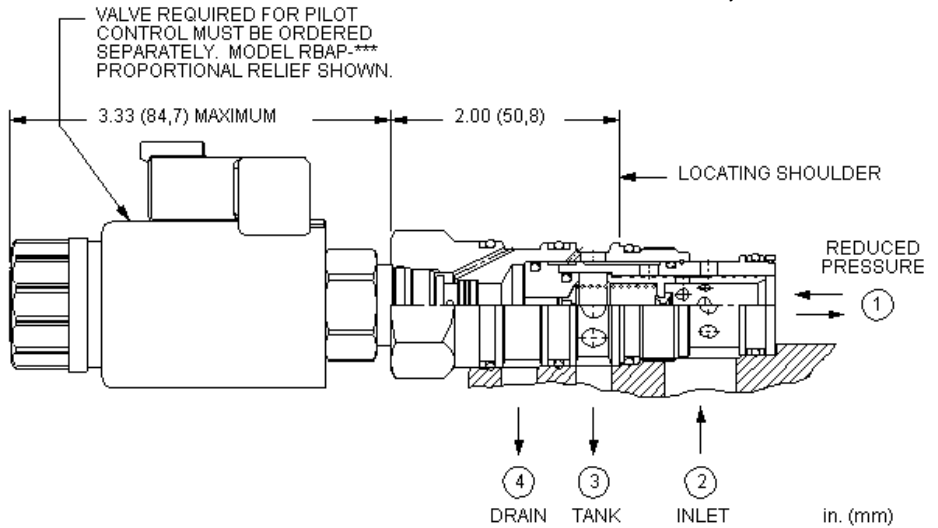
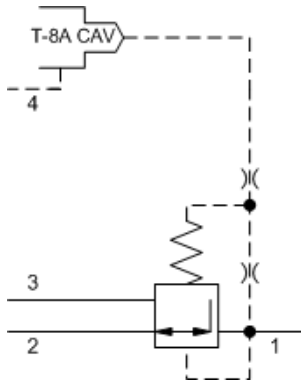
Maximum Operating Pressure	350 bar
Control Pilot Flow	0,11 - 0,16 L/min.
Pilot Control Cavity	T-8A
Seal kit - Cartridge	Buna: 990021007
Seal kit - Cartridge	Polyurethane: 990021002
Seal kit - Cartridge	Viton: 990021006

NOTES Compound cartridge (pilot and main stage) assembly information is provided for reference only. Cartridges must be ordered separately and assembled at point of use.

CONFIGURATION OPTIONS

Model Code Example: PVDA8WN

MINIMUM CONTROL PRESSURE (W)	SEAL MATERIAL (N)
W 100 psi (7 bar)	N Buna-N
D 25 psi (1,7 bar)	V Viton



This valve is a 3-way, normally open modulating element, externally drained, that incorporates an integral pilot control cavity. The pilot control cavity will accept any T-8A pressure control cartridge. The valve reduces a high primary pressure at the inlet (port 2) to a constant reduced pressure at port 1, with a full flow relief function from port 1 to tank (port 3). The pilot cartridge's setting determines the difference in pressure between reduced pressure (port 1) and the drain (port 4).

TECHNICAL DATA

NOTE: DATA MAY VARY BY CONFIGURATION. SEE CONFIGURATION SECTION.

Maximum Operating Pressure	350 bar
Control Pilot Flow	0,16 - 0,25 L/min.
Pilot Control Cavity	T-8A
Seal kit - Cartridge	Buna: 990022007
Seal kit - Cartridge	Polyurethane: 990022002
Seal kit - Cartridge	Viton: 990022006

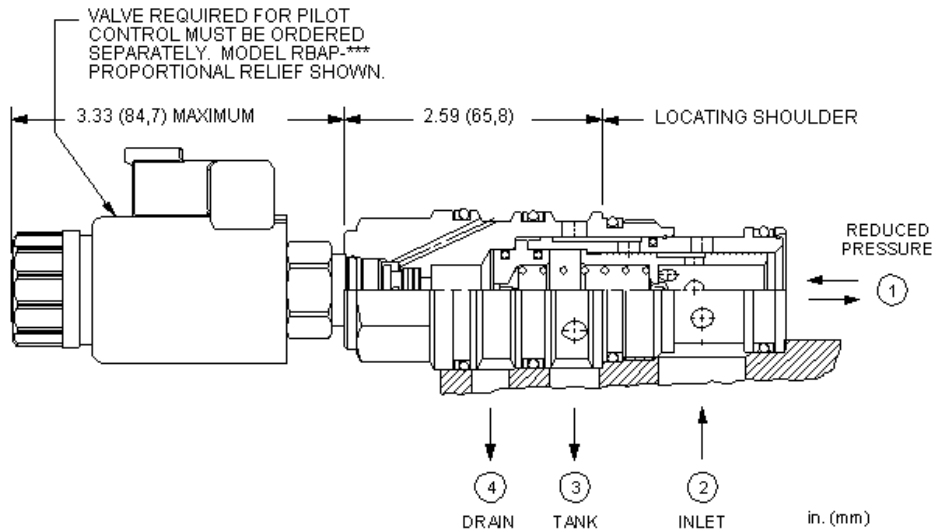
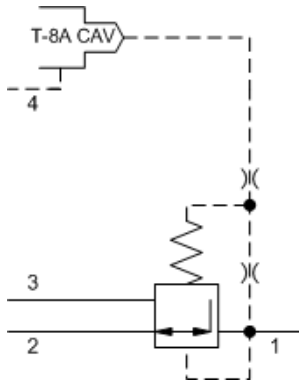
NOTES Compound cartridge (pilot and main stage) assembly information is provided for reference only. Cartridges must be ordered separately and assembled at point of use.

CONFIGURATION OPTIONS

Model Code Example: **PVFA8WN**

MINIMUM CONTROL PRESSURE (W) SEAL MATERIAL (N)

- | | |
|--------------------------|-----------------|
| W 100 psi (7 bar) | N Buna-N |
| D 25 psi (1,7 bar) | E EPDM |
| | V Viton |



This valve is a 3-way, normally open modulating element, externally drained, that incorporates an integral pilot control cavity. The pilot control cavity will accept any T-8A pressure control cartridge. The valve reduces a high primary pressure at the inlet (port 2) to a constant reduced pressure at port 1, with a full flow relief function from port 1 to tank (port 3). The pilot cartridge's setting determines the difference in pressure between reduced pressure (port 1) and the drain (port 4).

TECHNICAL DATA

NOTE: DATA MAY VARY BY CONFIGURATION. SEE CONFIGURATION SECTION.

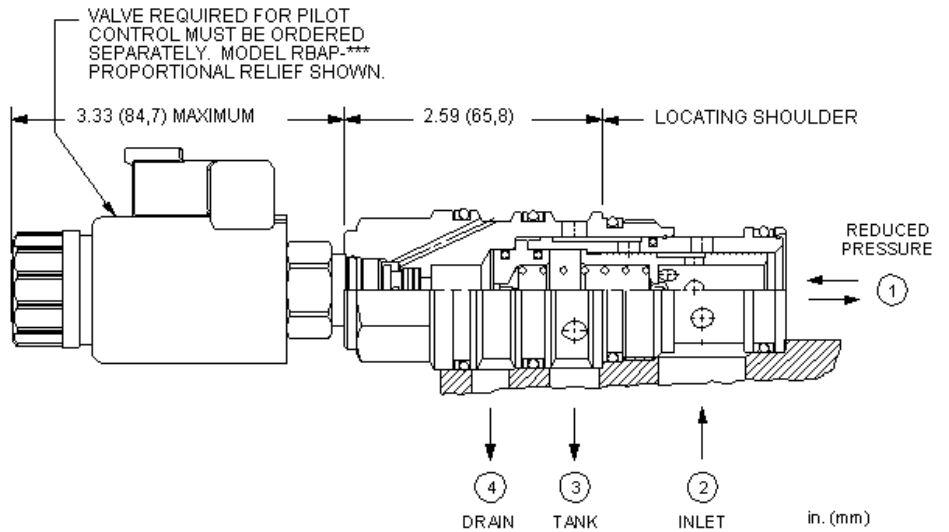
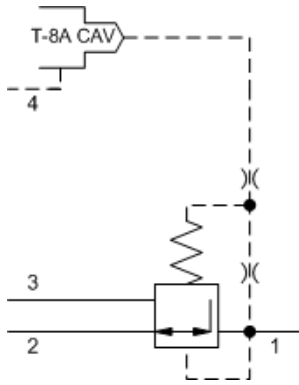
Maximum Operating Pressure	350 bar
Control Pilot Flow	0,25 - 0,33 L/min.
Pilot Control Cavity	T-8A
Pilot Control Valve Installation Torque	27 - 33 Nm
Pilot Control Valve Hex Size	22,2 mm
Seal kit - Cartridge	Buna: 990023007
Seal kit - Cartridge	Polyurethane: 990023002
Seal kit - Cartridge	Viton: 990023006

NOTES Compound cartridge (pilot and main stage) assembly information is provided for reference only. Cartridges must be ordered separately and assembled at point of use.

CONFIGURATION OPTIONS

Model Code Example: PVHA8WN

MINIMUM CONTROL PRESSURE (W)	SEAL MATERIAL (N)
W 100 psi (7 bar)	N Buna-N
D 25 psi (1,7 bar)	E EPDM
	V Viton



This valve is a 3-way, normally open modulating element, externally drained, that incorporates an integral pilot control cavity. The pilot control cavity will accept any T-8A pressure control cartridge. The valve reduces a high primary pressure at the inlet (port 2) to a constant reduced pressure at port 1, with a full flow relief function from port 1 to tank (port 3). The pilot cartridge's setting determines the difference in pressure between reduced pressure (port 1) and the drain (port 4).

This valve is open in the transition from reducing to relieving which provides good pressure control and dynamic response at the expense of higher pilot flow in the deadheaded condition.

TECHNICAL DATA

NOTE: DATA MAY VARY BY CONFIGURATION. SEE CONFIGURATION SECTION.

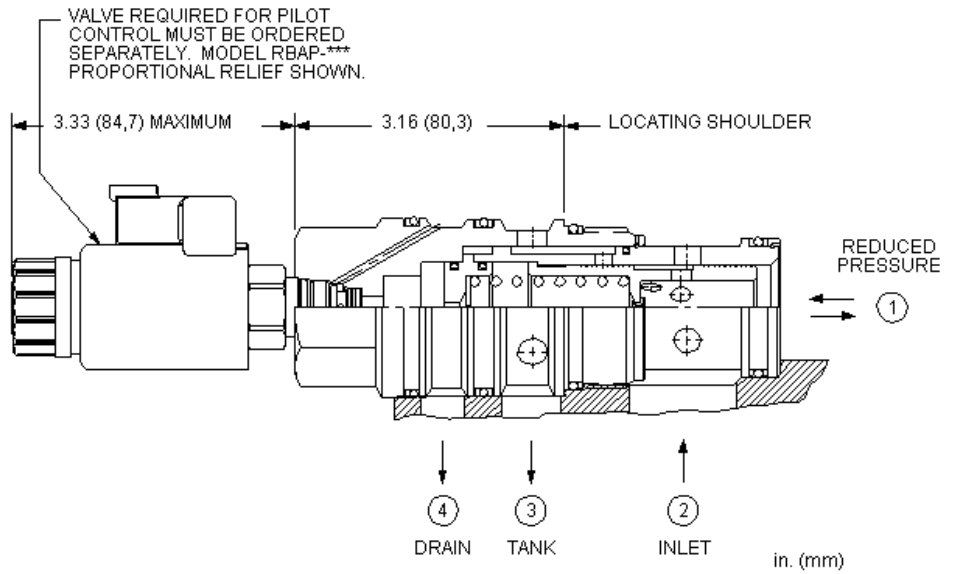
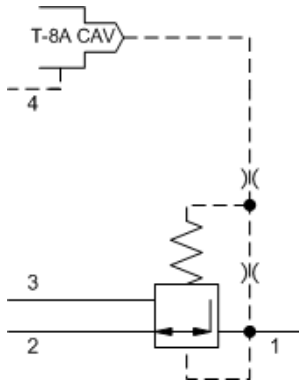
Maximum Operating Pressure	350 bar
Control Pilot Flow	0,40 - 0,50 L/min.
Pilot Control Cavity	T-8A
Pilot Control Valve Installation Torque	27 - 33 Nm
Pilot Control Valve Hex Size	22,2 mm
Seal kit - Cartridge	Buna: 990023007
Seal kit - Cartridge	EPDM: 990023014
Seal kit - Cartridge	Polyurethane: 990023002
Seal kit - Cartridge	Viton: 990023006

NOTES Compound cartridge (pilot and main stage) assembly information is provided for reference only. Cartridges must be ordered separately and assembled at point of use.

CONFIGURATION OPTIONS

Model Code Example: PVHL8WN

MINIMUM CONTROL PRESSURE (W)	SEAL MATERIAL (N)
W 150 psi (10,5 bar)	N Buna-N
D 100 psi (7 bar)	E EPDM
	V Viton



This valve is a 3-way, normally open modulating element, externally drained, that incorporates an integral pilot control cavity. The pilot control cavity will accept any T-8A pressure control cartridge. The valve reduces a high primary pressure at the inlet (port 2) to a constant reduced pressure at port 1, with a full flow relief function from port 1 to tank (port 3). The pilot cartridge's setting determines the difference in pressure between reduced pressure (port 1) and the drain (port 4).

TECHNICAL DATA

NOTE: DATA MAY VARY BY CONFIGURATION. SEE CONFIGURATION SECTION.

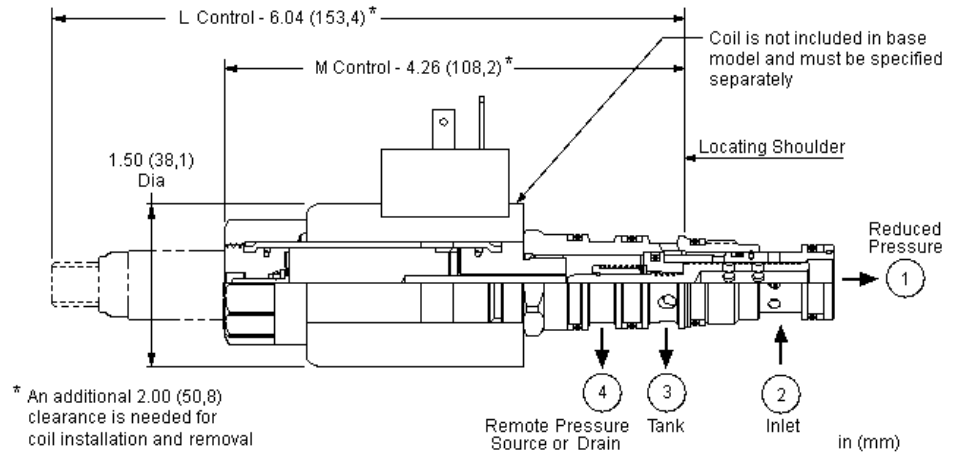
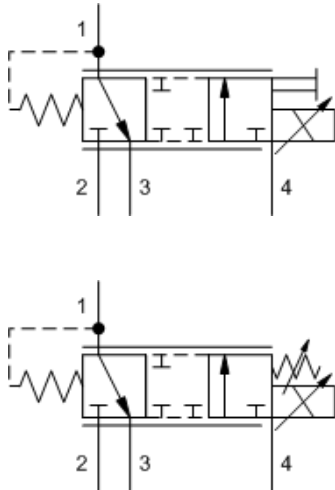
Maximum Operating Pressure	350 bar
Control Pilot Flow	0,25 - 0,33 L/min.
Pilot Control Cavity	T-8A
Seal kit - Cartridge	Buna: 990024007
Seal kit - Cartridge	Polyurethane: 990024002
Seal kit - Cartridge	Viton: 990024006

NOTES Compound cartridge (pilot and main stage) assembly information is provided for reference only. Cartridges must be ordered separately and assembled at point of use.

CONFIGURATION OPTIONS

Model Code Example: PVJA8WN

MINIMUM CONTROL PRESSURE (W)	SEAL MATERIAL (N)
W 100 psi (7 bar)	N Buna-N
D 25 psi (1,7 bar)	E EPDM
	V Viton



This electro-proportional, direct-acting reducer/reliever valve reduces a high primary pressure at the inlet (port 2) to a constant reduced pressure at port 1, with a full flow relief function from port 1 to tank (port 3). The valve is biased to the relieving mode. Energizing the coil connects port 2 to port 1. Increasing the current to the coil will proportionally increase the reduced pressure at port 1. If pressure at port 1 exceeds the setting induced by the coil, pressure at port 1 is relieved to port 3. Draining port 4 makes the valve insensitive to pressure at port 3. This valve is closed in the transition between reducing and relieving resulting in very low consumption of oil. Optional full manual control is available.

TECHNICAL DATA

NOTE: DATA MAY VARY BY CONFIGURATION. SEE CONFIGURATION SECTION.

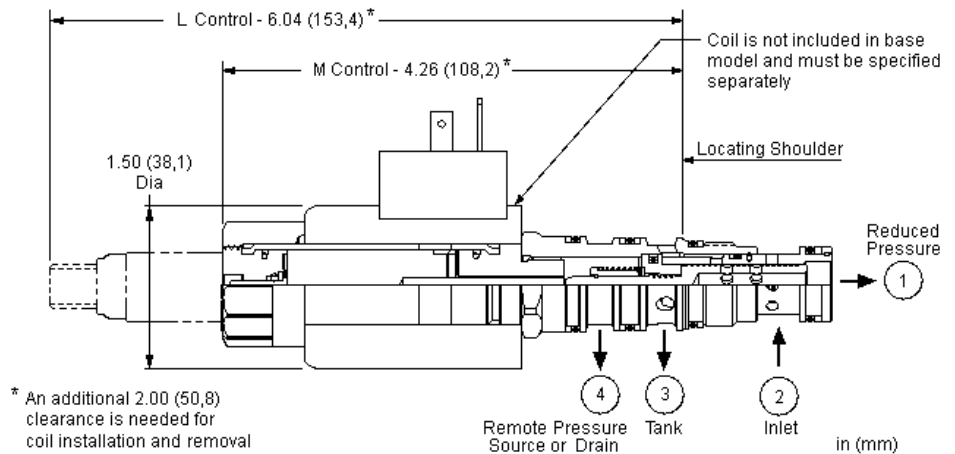
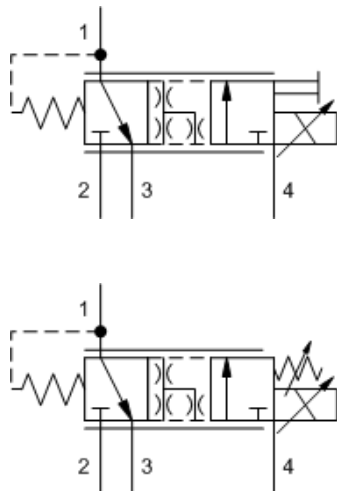
Maximum Operating Pressure	350 bar
Maximum Valve Leakage at 110 SUS (24 cSt)	41 cc/min.
Optimum Inlet Pressure	210 bar
Adjustment - No. of CW Turns from Min. to Max. setting	5
Locknut Hex Size	15 mm
Locknut Torque	9 - 10 Nm
Seal kit - Cartridge	Buna: 990021007
Seal kit - Cartridge	Polyurethane: 990021002
Seal kit - Cartridge	Viton: 990021006

NOTES Please verify cartridge clearance requirements when choosing a Sun manifold. Different valve controls and coils require different clearances.

CONFIGURATION OPTIONS
Model Code Example: PSDPMDN

CONTROL	(M) OPERATING RANGE	(D) SEAL MATERIAL	(N) COIL *
M Manual Override (Standard)	D 50 - 485 psi (3,5 - 33,5 bar)	N Buna-N	No coil
L Standard Screw Adjustment	B 100 - 1125 psi (7 - 77,5 bar)	V Viton	212 DIN 43650-Form A, 12 VDC
	E 25 - 250 psi (1,7 - 18 bar)		224 DIN 43650-Form A, 24 VDC
			912 Deutsch DT04-2P, 12 VDC
			924 Deutsch DT04-2P, 24 VDC

* Additional coil options are available



This electro-proportional, direct-acting reducer/reliever valve reduces a high primary pressure at the inlet (port 2) to a constant reduced pressure at port 1, with a full flow relief function from port 1 to tank (port 3). The valve is biased to the relieving mode. Energizing the coil connects port 2 to port 1. Increasing the current to the coil will proportionally increase the reduced pressure at port 1. If pressure at port 1 exceeds the setting induced by the coil, pressure at port 1 is relieved to port 3. Draining port 4 makes the valve insensitive to pressure at port 3. This valve is open in the transition from reducing to relieving which provides good pressure control and dynamic response. Optional full manual control is available.

TECHNICAL DATA

NOTE: DATA MAY VARY BY CONFIGURATION. SEE CONFIGURATION SECTION.

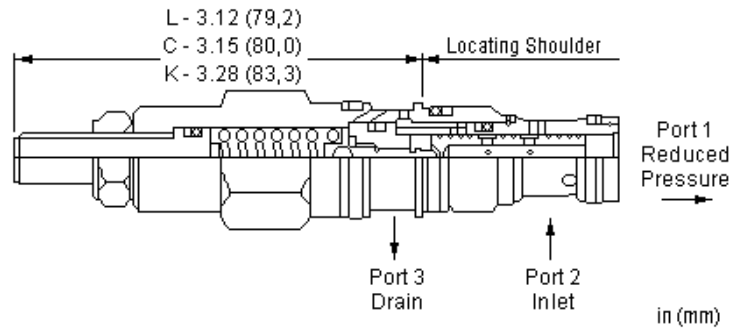
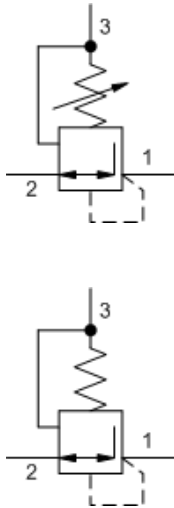
Maximum Operating Pressure	350 bar
Maximum Valve Leakage at 110 SUS (24 cSt)	330 cc/min.
Adjustment - No. of CW Turns from Min. to Max. setting	5
Locknut Hex Size	15 mm
Locknut Torque	9 - 10 Nm
Seal kit - Cartridge	Buna: 990021007
Seal kit - Cartridge	Polyurethane: 990021002
Seal kit - Cartridge	Viton: 990021006

NOTES Please verify cartridge clearance requirements when choosing a Sun manifold. Different valve controls and coils require different clearances.

CONFIGURATION OPTIONS
Model Code Example: PSDLMDN

CONTROL	(M) OPERATING RANGE	(D) SEAL MATERIAL	(N) COIL *
M Manual Override (Standard)	D 50 - 485 psi (3,5 - 33,5 bar)	N Buna-N	No coil
L Standard Screw Adjustment	B 100 - 1125 psi (7 - 77,5 bar)	V Viton	212 DIN 43650-Form A, 12 VDC
	E 25 - 250 psi (1,7 - 18 bar)		224 DIN 43650-Form A, 24 VDC
	S 10 - 100 psi (0,7 - 7 bar)		912 Deutsch DT04-2P, 12 VDC
			924 Deutsch DT04-2P, 24 VDC

* Additional coil options are available



Direct-acting, pressure reducing/relieving valves reduce a high primary pressure at the inlet (port 2) to a constant reduced pressure at port 1, with a full-flow relief function from port 1 to tank (port 3). These valves incorporate a damped construction for stable operation allowing the use of high reduced pressure.

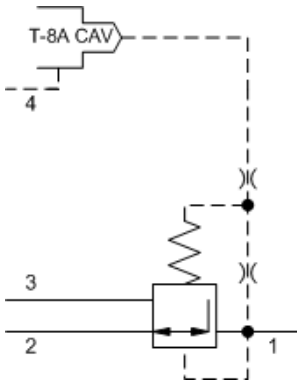
TECHNICAL DATA

NOTE: DATA MAY VARY BY CONFIGURATION. SEE CONFIGURATION SECTION.

Factory Pressure Settings Established at	0.25 gpm
Maximum Operating Pressure	350 bar
Maximum Valve Leakage at 110 SUS (24 cSt)	30 cc/min.
Adjustment - No. of CW Turns from Min. to Max. setting	7
Locknut Hex Size	12,7 mm
Locknut Torque	9 - 10 Nm
Seal kit - Cartridge	Buna: 990163007
Seal kit - Cartridge	EPDM: 990163014
Seal kit - Cartridge	Viton: 990163006

CONFIGURATION OPTIONS
Model Code Example: PRBBLAN

CONTROL	(L) ADJUSTMENT RANGE	(A) SEAL MATERIAL	(N) MATERIAL/COATING
L Standard Screw Adjustment	A 500 - 3000 psi (35 - 210 bar), 700 psi (50 bar) Standard Setting	N Buna-N	Standard Material/Coating
C Tamper Resistant - Factory Set	B 50 - 1500 psi (3,5 - 105 bar), 200 psi (14 bar) Standard Setting	E EPDM	/AP Stainless Steel, Passivated
K Handknob	D 25 - 800 psi (1,7 - 55 bar), 200 psi (14 bar) Standard Setting	V Viton	/LH Mild Steel, Zinc-Nickel
	E 25 - 400 psi (1,7 - 28 bar), 200 psi (14 bar) Standard Setting		
	S 25 - 200 psi (1,7 - 14 bar), 100 psi (7 bar) Standard Setting		
	W 750 - 4500 psi (50 - 315 bar), 1000 psi (70 bar) Standard Setting		



This valve is a 3-way, normally open modulating element, externally drained, that incorporates an integral pilot control cavity. The pilot control cavity will accept any T-8A pressure control cartridge. The valve reduces a high primary pressure at the inlet (port 2) to a constant reduced pressure at port 1, with a full flow relief function from port 1 to tank (port 3). The pilot cartridge's setting determines the difference in pressure between reduced pressure (port 1) and the drain (port 4).

TECHNICAL DATA

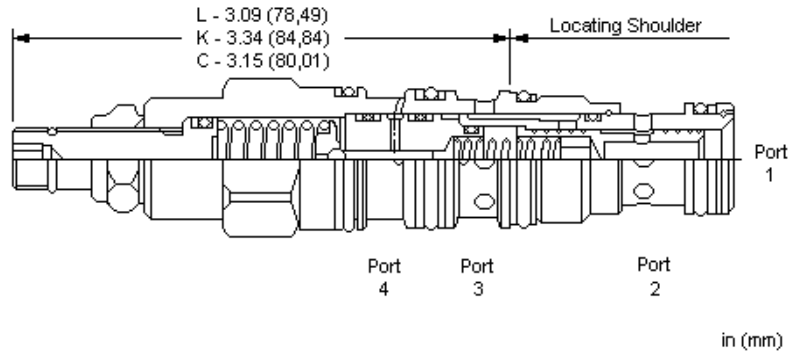
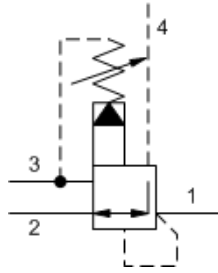
NOTE: DATA MAY VARY BY CONFIGURATION. SEE CONFIGURATION SECTION.

Maximum Operating Pressure	350 bar
Control Pilot Flow	0,11 - 0,16 L/min.
Pilot Control Cavity	T-8A
Seal kit - Cartridge	Buna: 990021007
Seal kit - Cartridge	Polyurethane: 990021002
Seal kit - Cartridge	Viton: 990021006

CONFIGURATION OPTIONS

Model Code Example: PVDC8WN

MINIMUM CONTROL PRESSURE (W)	SEAL MATERIAL (N)
W 100 psi (7 bar)	N Buna-N
D 25 psi (1,7 bar)	V Viton



Ventable, pilot-operated pressure reducing/relieving valves reduce a high primary pressure at the inlet to a constant reduced pressure at port 1, with a full-flow relief function from port 1 to tank (port 3). The vent port (port 4) can be used as a means for remote control by pilot or 2-way valves.

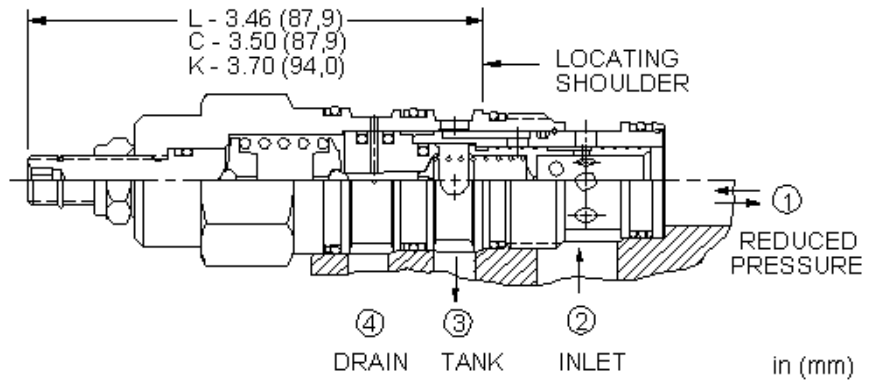
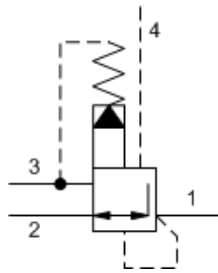
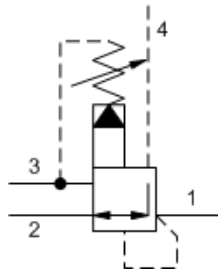
TECHNICAL DATA

NOTE: DATA MAY VARY BY CONFIGURATION. SEE CONFIGURATION SECTION.

Factory Pressure Settings Established at	blocked control port (dead headed)
Maximum Operating Pressure	350 bar
Control Pilot Flow	0,11 - 0,16 L/min.
Adjustment - No. of CW Turns from Min. to Max. setting	5
Locknut Hex Size	15 mm
Locknut Torque	9 - 10 Nm
Seal kit - Cartridge	Buna: 990021007
Seal kit - Cartridge	Polyurethane: 990021002
Seal kit - Cartridge	Viton: 990021006

CONFIGURATION OPTIONS
Model Code Example: PVDDLAN

CONTROL	(L)	ADJUSTMENT RANGE	(A)	SEAL MATERIAL	(N)
L Standard Screw Adjustment		A 100 - 3000 psi (7 - 210 bar), 200 psi (14 bar) Standard Setting		N Buna-N	
C Tamper Resistant - Factory Set		B 50 - 1500 psi (3,5 - 105 bar), 200 psi (14 bar) Standard Setting		V Viton	
K Handknob		D 25 - 800 psi (1,7 - 55 bar), 200 psi (14 bar) Standard Setting			
		E 25 - 400 psi (1,7 - 28 bar), 200 psi (14 bar) Standard Setting			
		W 150 - 4500 psi (10,5 - 315 bar), 200 psi (14 bar) Standard Setting			



Ventable, pilot-operated pressure reducing/relieving valves reduce a high primary pressure at the inlet to a constant reduced pressure at port 1, with a full-flow relief function from port 1 to tank (port 3). The vent port (port 4) can be used as a means for remote control by pilot or 2-way valves.

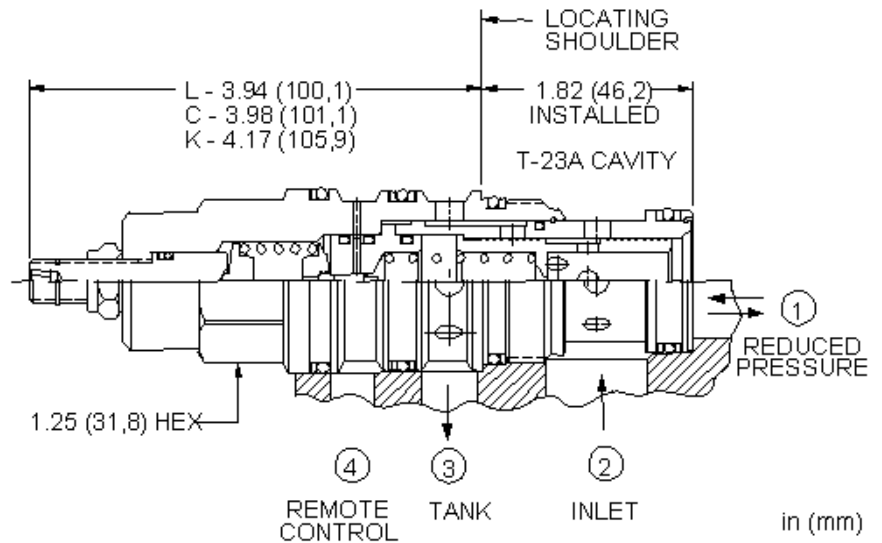
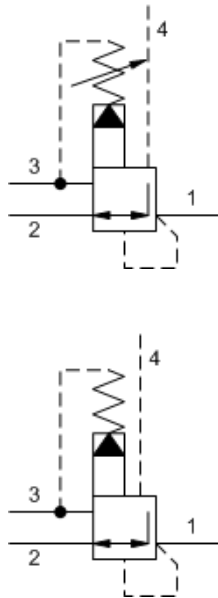
TECHNICAL DATA

NOTE: DATA MAY VARY BY CONFIGURATION. SEE CONFIGURATION SECTION.

Factory Pressure Settings Established at	blocked control port (dead headed)
Maximum Operating Pressure	350 bar
Control Pilot Flow	0,16 - 0,25 L/min.
Adjustment - No. of CW Turns from Min. to Max. setting	5
Locknut Hex Size	15 mm
Locknut Torque	9 - 10 Nm
Seal kit - Cartridge	Buna: 990022007
Seal kit - Cartridge	Polyurethane: 990022002
Seal kit - Cartridge	Viton: 990022006

CONFIGURATION OPTIONS
Model Code Example: PVFDLAN

CONTROL	(L) ADJUSTMENT RANGE	(A) SEAL MATERIAL	(N) MATERIAL/COATING
L Standard Screw Adjustment	A 100 - 3000 psi (7 - 210 bar), 200 psi (14 bar) Standard Setting	N Buna-N	Standard Material/Coating
C Tamper Resistant - Factory Set	B 50 - 1500 psi (3,5 - 105 bar), 200 psi (14 bar) Standard Setting	V Viton	/AP Stainless Steel, Passivated
K Handknob	D 25 - 800 psi (1,7 - 55 bar), 200 psi (14 bar) Standard Setting		
	E 25 - 400 psi (1,7 - 28 bar), 200 psi (14 bar) Standard Setting		
	W 150 - 4500 psi (10,5 - 315 bar), 200 psi (14 bar) Standard Setting		



Ventable, pilot-operated pressure reducing/relieving valves reduce a high primary pressure at the inlet to a constant reduced pressure at port 1, with a full-flow relief function from port 1 to tank (port 3). The vent port (port 4) can be used as a means for remote control by pilot or 2-way valves.

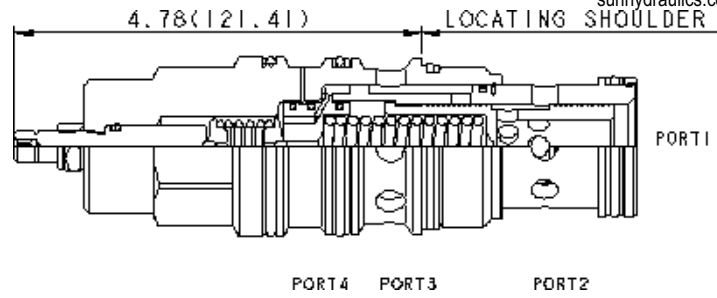
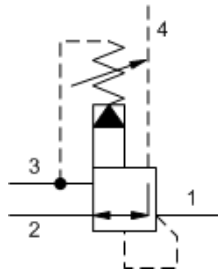
TECHNICAL DATA

NOTE: DATA MAY VARY BY CONFIGURATION. SEE CONFIGURATION SECTION.

Factory Pressure Settings Established at	blocked control port (dead headed)
Maximum Operating Pressure	350 bar
Control Pilot Flow	0,25 - 0,33 L/min.
Adjustment - No. of CW Turns from Min. to Max. setting	5
Locknut Hex Size	15 mm
Locknut Torque	9 - 10 Nm
Seal kit - Cartridge	Buna: 990023007
Seal kit - Cartridge	Polyurethane: 990023002
Seal kit - Cartridge	Viton: 990023006

CONFIGURATION OPTIONS
Model Code Example: PVHDLAN

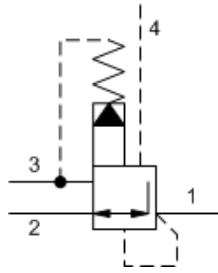
CONTROL	(L)	ADJUSTMENT RANGE	(A)	SEAL MATERIAL	(N)	MATERIAL/COATING
L Standard Screw Adjustment	A	100 - 3000 psi (7 - 210 bar), 200 psi (14 bar) Standard Setting	N	Buna-N	N	Standard Material/Coating
C Tamper Resistant - Factory Set	B	50 - 1500 psi (3,5 - 105 bar), 200 psi (14 bar) Standard Setting	V	Viton	N	/AP Stainless Steel, Passivated
K Handknob	D	25 - 800 psi (1,7 - 55 bar), 200 psi (14 bar) Standard Setting				
	E	25 - 400 psi (1,7 - 28 bar), 200 psi (14 bar) Standard Setting				
	H	30 - 3000 psi (2 - 210 bar), 200 psi (14 bar) Standard Setting				
	J	25 - 1500 psi (1,7 - 105 bar), 200 psi (14 bar) Standard Setting				
	W	150 - 4500 psi (10,5 - 315 bar), 200 psi (14 bar) Standard Setting				



Ventable, pilot-operated pressure reducing/relieving valves reduce a high primary pressure at the inlet to a constant reduced pressure at port 1, with a full-flow relief function from port 1 to tank (port 3). The vent port (port 4) can be used as a means for remote control by pilot or 2-way valves.

TECHNICAL DATA

NOTE: DATA MAY VARY BY CONFIGURATION. SEE CONFIGURATION SECTION.



Factory Pressure Settings Established at	blocked control port (dead headed)
Maximum Operating Pressure	350 bar
Control Pilot Flow	0,25 - 0,33 L/min.
Adjustment - No. of CW Turns from Min. to Max. setting	5
Locknut Hex Size	15 mm
Locknut Torque	9 - 10 Nm
Seal kit - Cartridge	Buna: 990024007
Seal kit - Cartridge	Polyurethane: 990024002
Seal kit - Cartridge	Viton: 990024006

CONFIGURATION OPTIONS
Model Code Example: PVJDLAN

CONTROL	(L) ADJUSTMENT RANGE	(A) SEAL MATERIAL	(N) MATERIAL/COATING
L Standard Screw Adjustment	A 100 - 3000 psi (7 - 210 bar), 200 psi (14 bar) Standard Setting	N Buna-N	Standard Material/Coating
C Tamper Resistant - Factory Set	B 50 - 1500 psi (3,5 - 105 bar), 200 psi (14 bar) Standard Setting	V Viton	/AP Stainless Steel, Passivated
K Handknob	C 150 - 6000 psi (10,5 - 420 bar), 200 psi (14 bar) Standard Setting		
	D 25 - 800 psi (1,7 - 55 bar), 200 psi (14 bar) Standard Setting		
	E 25 - 400 psi (1,7 - 28 bar), 200 psi (14 bar) Standard Setting		
	H 30 - 3000 psi (2 - 210 bar), 200 psi (14 bar) Standard Setting		
	J 25 - 1500 psi (1,7 - 105 bar), 200 psi (14 bar) Standard Setting		
	W 100 - 4500 psi (7 - 315 bar), 200 psi (14 bar) Standard Setting		

smart SOLUTIONS for DEMANDING applications



www.sunhydraulics.com

Sun Hydraulics Headquarters
Sarasota, Florida USA
+1 941 362 1200

Sun Hydraulics Limited
Coventry England
+44 2476 217 400
sales@sunuk.com

Sun Hydraulik GmbH
Erkelenz Germany
+49 2431 80910
sales@sunhydraulik.de

Sun Hydraulics Corp. (India)
Bangalore India
+91 8028 456325
sunindiainfo@sunhydraulics.com

Sun Hydraulics Korea Corp.
Incheon Korea
+82 3281 31350
sales@sunhydraulics.co.kr

Sun Hydraulics China Co. Ltd.
Shanghai P.R. China
+86 2162 375885
sunchinainfo@sunhydraulics.com

Sun Hydraulics Corp. (S.America)
Rosario, Argentina
+54 9 341 584 3075
ventas@sunhydraulics.com